

Datasheet for ABIN1536831
anti-TAS2R13 antibody (C-Term)[Go to Product page](#)

1 Image

Overview

Quantity:	400 µL
Target:	TAS2R13
Binding Specificity:	AA 199-228, C-Term
Reactivity:	Human
Host:	Rabbit
Clonality:	Polyclonal
Conjugate:	This TAS2R13 antibody is un-conjugated
Application:	Western Blotting (WB)

Product Details

Immunogen:	This TAS2R13 antibody is generated from rabbits immunized with a KLH conjugated synthetic peptide between 199-228 amino acids from the C-terminal region of human TAS2R13.
Clone:	RB37213
Isotype:	Ig Fraction
Purification:	This antibody is purified through a protein A column, followed by peptide affinity purification.

Target Details

Target:	TAS2R13
Alternative Name:	TAS2R13 (TAS2R13 Products)
Background:	This gene product belongs to the family of candidate taste receptors that are members of the

Target Details

G-protein-coupled receptor superfamily. These proteins are specifically expressed in the taste receptor cells of the tongue and palate epithelia. They are organized in the genome in clusters and are genetically linked to loci that influence bitter perception in mice and humans. In functional expression studies, they respond to bitter tastants. This gene maps to the taste receptor gene cluster on chromosome 12p13.

Molecular Weight: 35118

Gene ID: 50838

NCBI Accession: [NP_076409](#)

UniProt: [Q9NYV9](#)

Application Details

Application Notes: WB: 1:1000

Restrictions: For Research Use only

Handling

Format: Liquid

Buffer: Purified polyclonal antibody supplied in PBS with 0.09 % (W/V) sodium azide.

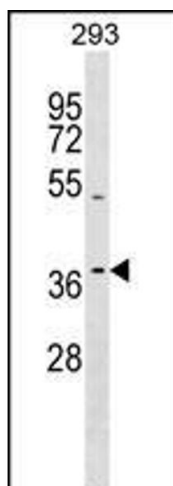
Preservative: Sodium azide

Precaution of Use: This product contains Sodium azide: a POISONOUS AND HAZARDOUS SUBSTANCE which should be handled by trained staff only.

Storage: 4 °C,-20 °C

Storage Comment: TAS2R13 Antibody (C-term) can be refrigerated at 2-8 °C for up to 6 months. For long term storage, keep at -20 °C.

Expiry Date: 6 months



Western Blotting

Image 1. TAS2R13 Antibody (C-term) (ABIN1536831 and ABIN2848967) western blot analysis in 293 cell line lysates (35 µg/lane). This demonstrates the TAS2R13 antibody detected the TAS2R13 protein (arrow).