

Datasheet for ABIN1536840  
**anti-HLF antibody (C-Term)**[Go to Product page](#)

## 1 Image

## Overview

Quantity:	400 µL
Target:	HLF
Binding Specificity:	AA 204-232, C-Term
Reactivity:	Human
Host:	Rabbit
Clonality:	Polyclonal
Conjugate:	This HLF antibody is un-conjugated
Application:	Western Blotting (WB)

## Product Details

Immunogen:	This HLF antibody is generated from rabbits immunized with a KLH conjugated synthetic peptide between 204-232 amino acids from the C-terminal region of human HLF.
Clone:	RB36982
Isotype:	Ig Fraction
Predicted Reactivity:	M, Rat
Purification:	This antibody is purified through a protein A column, followed by peptide affinity purification.

## Target Details

Target:	HLF
Alternative Name:	HLF ( <a href="#">HLF Products</a> )

## Target Details

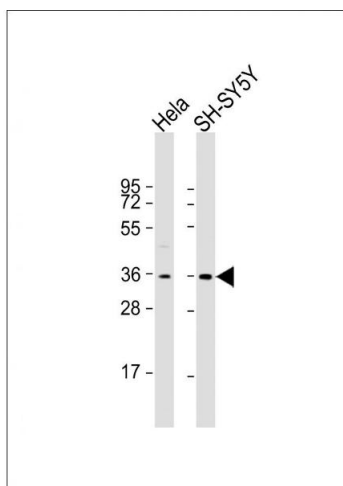
Background:	This gene encodes a member of the proline and acidic-rich (PAR) protein family, a subset of the bZIP transcription factors. The encoded protein forms homodimers or heterodimers with other PAR family members and binds sequence-specific promoter elements to activate transcription. Chromosomal translocations fusing portions of this gene with the E2A gene cause a subset of childhood B-lineage acute lymphoid leukemias. Alternatively spliced transcript variants have been described, but their biological validity has not been determined.
Molecular Weight:	33199
Gene ID:	3131
NCBI Accession:	<a href="#">NP_002117</a>
UniProt:	<a href="#">Q16534</a>

## Application Details

Application Notes:	WB: 1:2000
Restrictions:	For Research Use only

## Handling

Format:	Liquid
Buffer:	Purified polyclonal antibody supplied in PBS with 0.09 % (W/V) sodium azide.
Preservative:	Sodium azide
Precaution of Use:	This product contains Sodium azide: a POISONOUS AND HAZARDOUS SUBSTANCE which should be handled by trained staff only.
Storage:	4 °C, -20 °C
Storage Comment:	HLF Antibody (C-term) can be refrigerated at 2-8 °C for up to 6 months. For long term storage, keep at -20 °C.
Expiry Date:	6 months



### Western Blotting

**Image 1.** All lanes : Anti-HLF Antibody (C-term) at 1:2000 dilution Lane 1: HeLa whole cell lysate Lane 2: SH-SY5Y whole cell lysate Lysates/proteins at 20 µg per lane. Secondary Goat Anti-Rabbit IgG, (H+L), Peroxidase conjugated at 1/10000 dilution. Predicted band size : 33 kDa Blocking/Dilution buffer: 5 % NFDM/TBST.