

Datasheet for ABIN1536841
anti-PPP1R3B antibody (C-Term)[Go to Product page](#)

1 Image

Overview

Quantity:	400 µL
Target:	PPP1R3B
Binding Specificity:	AA 205-231, C-Term
Reactivity:	Human
Host:	Rabbit
Clonality:	Polyclonal
Conjugate:	This PPP1R3B antibody is un-conjugated
Application:	Western Blotting (WB)

Product Details

Immunogen:	This PPP1R3B antibody is generated from rabbits immunized with a KLH conjugated synthetic peptide between 205-231 amino acids from the C-terminal region of human PPP1R3B.
Clone:	RB37605
Isotype:	Ig Fraction
Purification:	This antibody is purified through a protein A column, followed by peptide affinity purification.

Target Details

Target:	PPP1R3B
Alternative Name:	PPP1R3B (PPP1R3B Products)
Background:	The protein phosphatase-1 (PP1) catalytic subunit (PPP1CA, MIM 176875) is regulated by

Target Details

targeting subunits, such as PP1R3B. PP1R3B suppresses the rate at which PP1 dephosphorylates (i.e., inactivates) glycogen phosphorylase (see PYGL, MIM 232700) and enhances the rate at which it activates glycogen synthase (see GYS2, MIM 138571) (Doherty et al., 1995 [PubMed 7498521]).[supplied by OMIM].

Molecular Weight: 32695

Gene ID: 79660

NCBI Accession: [NP_001188258](#), [NP_078883](#)

UniProt: [Q86XI6](#)

Pathways: [Cellular Glucan Metabolic Process](#), [Regulation of Carbohydrate Metabolic Process](#)

Application Details

Application Notes: WB: 1:1000

Restrictions: For Research Use only

Handling

Format: Liquid

Buffer: Purified polyclonal antibody supplied in PBS with 0.09 % (W/V) sodium azide.

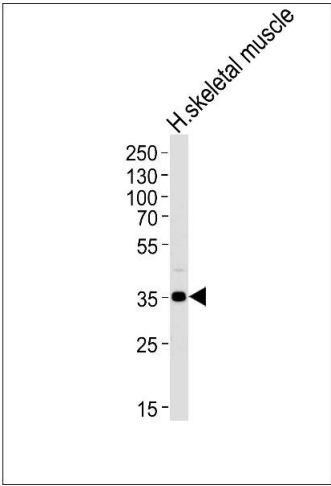
Preservative: Sodium azide

Precaution of Use: This product contains Sodium azide: a POISONOUS AND HAZARDOUS SUBSTANCE which should be handled by trained staff only.

Storage: 4 °C,-20 °C

Storage Comment: PPP1R3B Antibody (C-term) can be refrigerated at 2-8 °C for up to 6 months. For long term storage, keep at -20 °C.

Expiry Date: 6 months



Western Blotting

Image 1. Western blot analysis of lysate from human skeletal muscle tissue lysate, using P1R3B Antibody (C-term) (ABIN1536841 and ABIN2849732). (ABIN1536841 and ABIN2849732) was diluted at 1:1000 at each lane. A goat anti-rabbit IgG H&L(HRP) at 1:5000 dilution was used as the secondary antibody. Lysate at 35 µg per lane.