



[Go to Product page](#)

Datasheet for ABIN1536854
anti-GEMIN8 antibody (C-Term)

1 Image

Overview

Quantity:	400 µL
Target:	GEMIN8
Binding Specificity:	AA 213-239, C-Term
Reactivity:	Human
Host:	Rabbit
Clonality:	Polyclonal
Conjugate:	This GEMIN8 antibody is un-conjugated
Application:	Western Blotting (WB)

Product Details

Immunogen:	This GEMIN8 antibody is generated from rabbits immunized with a KLH conjugated synthetic peptide between 213-239 amino acids from the C-terminal region of human GEMIN8.
Clone:	RB38258
Isotype:	Ig Fraction
Predicted Reactivity:	M
Purification:	This antibody is purified through a protein A column, followed by peptide affinity purification.

Target Details

Target:	GEMIN8
Alternative Name:	GEMIN8 (GEMIN8 Products)

Target Details

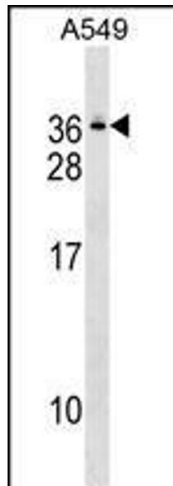
Background:	The protein encoded by this gene is part of the SMN complex, which is necessary for spliceosomal snRNP assembly in the cytoplasm and pre-mRNA splicing in the nucleus. The encoded protein binds to both SMN1 and the GEMIN6/GEMIN7 heterodimer, mediating their interaction. This protein is found in nuclear Gemini of Cajal bodies (gems) and in the cytoplasm. Three transcript variants encoding the same protein have been found for this gene. [provided by RefSeq].
Molecular Weight:	28637
Gene ID:	54960
NCBI Accession:	NP_001035944 , NP_001035945 , NP_060326
UniProt:	Q9NWZ8
Pathways:	Ribonucleoprotein Complex Subunit Organization

Application Details

Application Notes:	WB: 1:1000
Restrictions:	For Research Use only

Handling

Format:	Liquid
Buffer:	Purified polyclonal antibody supplied in PBS with 0.09 % (W/V) sodium azide.
Preservative:	Sodium azide
Precaution of Use:	This product contains Sodium azide: a POISONOUS AND HAZARDOUS SUBSTANCE which should be handled by trained staff only.
Storage:	4 °C,-20 °C
Storage Comment:	GEMIN8 Antibody (C-term) can be refrigerated at 2-8 °C for up to 6 months. For long term storage, keep at -20 °C.
Expiry Date:	6 months



Western Blotting

Image 1. GEMIN8 Antibody (C-term) (ABIN1536854 and ABIN2849480) western blot analysis in A549 cell line lysates (35 µg/lane). This demonstrates the GEMIN8 antibody detected the GEMIN8 protein (arrow).