



[Go to Product page](#)

Datasheet for ABIN1536861
anti-MAP3K7CL antibody (C-Term)

1 Image

Overview

Quantity:	400 µL
Target:	MAP3K7CL
Binding Specificity:	AA 215-241, C-Term
Reactivity:	Human
Host:	Rabbit
Clonality:	Polyclonal
Conjugate:	This MAP3K7CL antibody is un-conjugated
Application:	Western Blotting (WB)

Product Details

Immunogen:	This TAK1L antibody is generated from rabbits immunized with a KLH conjugated synthetic peptide between 215-241 amino acids from the C-terminal region of human TAK1L.
Clone:	RB39896
Isotype:	Ig Fraction
Purification:	This antibody is purified through a protein A column, followed by peptide affinity purification.

Target Details

Target:	MAP3K7CL
Alternative Name:	TAK1L (MAP3K7CL Products)
Background:	TAK1L plays a critical role in the TGF beta signaling transduction pathway.

Target Details

Molecular Weight:	16372
Gene ID:	56911
NCBI Accession:	NP_064537
UniProt:	P57077

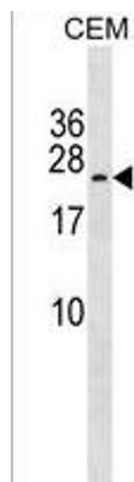
Application Details

Application Notes:	WB: 1:1000
Restrictions:	For Research Use only

Handling

Format:	Liquid
Buffer:	Purified polyclonal antibody supplied in PBS with 0.09 % (W/V) sodium azide.
Preservative:	Sodium azide
Precaution of Use:	This product contains Sodium azide: a POISONOUS AND HAZARDOUS SUBSTANCE which should be handled by trained staff only.
Storage:	4 °C, -20 °C
Storage Comment:	TAK1L Antibody (C-term) can be refrigerated at 2-8 °C for up to 6 months. For long term storage, keep at -20 °C.
Expiry Date:	6 months

Images



Western Blotting

Image 1. TAK1L Antibody (C-term) (ABIN1536861 and ABIN2838127) western blot analysis in CEM cell line lysates (35 µg/lane). This demonstrates the TAK1L antibody detected the TAK1L protein (arrow).