

Datasheet for ABIN1536867
anti-SYAP1 antibody (C-Term)[Go to Product page](#)

1 Image

Overview

Quantity:	400 µL
Target:	SYAP1
Binding Specificity:	AA 210-238, C-Term
Reactivity:	Human
Host:	Rabbit
Clonality:	Polyclonal
Conjugate:	This SYAP1 antibody is un-conjugated
Application:	Western Blotting (WB)

Product Details

Immunogen:	This SYAP1 antibody is generated from rabbits immunized with a KLH conjugated synthetic peptide between 210-238 amino acids from the C-terminal region of human SYAP1.
Clone:	RB36586
Isotype:	Ig Fraction
Purification:	This antibody is purified through a protein A column, followed by peptide affinity purification.

Target Details

Target:	SYAP1
Alternative Name:	SYAP1 (SYAP1 Products)
Background:	Synapse-associated protein 1 is a protein that in humans is encoded by the SYAP1 gene.

Target Details

Molecular Weight:	39933
Gene ID:	94056
NCBI Accession:	NP_116185
UniProt:	Q96A49

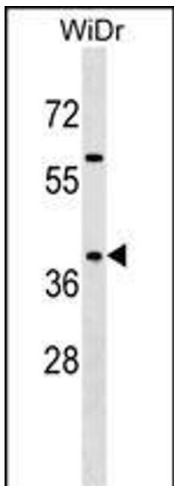
Application Details

Application Notes:	WB: 1:1000
Restrictions:	For Research Use only

Handling

Format:	Liquid
Buffer:	Purified polyclonal antibody supplied in PBS with 0.09 % (W/V) sodium azide.
Preservative:	Sodium azide
Precaution of Use:	This product contains Sodium azide: a POISONOUS AND HAZARDOUS SUBSTANCE which should be handled by trained staff only.
Storage:	4 °C,-20 °C
Storage Comment:	SYAP1 Antibody (C-term) can be refrigerated at 2-8 °C for up to 6 months. For long term storage, keep at -20 °C.
Expiry Date:	6 months

Images



Western Blotting

Image 1. SY Antibody (C-term) 7291b western blot analysis in WiDr cell line lysates (35 µg/lane). This demonstrates the SY antibody detected the SY protein (arrow).