

Datasheet for ABIN1536872
anti-RAB26 antibody (C-Term)[Go to Product page](#)

1 Image

Overview

Quantity:	400 µL
Target:	RAB26
Binding Specificity:	AA 222-248, C-Term
Reactivity:	Human
Host:	Rabbit
Clonality:	Polyclonal
Conjugate:	This RAB26 antibody is un-conjugated
Application:	Western Blotting (WB)

Product Details

Immunogen:	This RAB26 antibody is generated from rabbits immunized with a KLH conjugated synthetic peptide between 222-248 amino acids from the C-terminal region of human RAB26.
Clone:	RB37612
Isotype:	Ig Fraction
Predicted Reactivity:	M, Rat
Purification:	This antibody is purified through a protein A column, followed by peptide affinity purification.

Target Details

Target:	RAB26
Alternative Name:	RAB26 (RAB26 Products)

Target Details

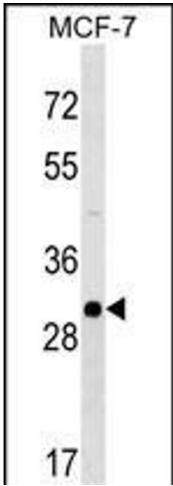
Background:	Members of the RAB protein family, including RAB26, are important regulators of vesicular fusion and trafficking. The RAB family of small G proteins regulates intercellular vesicle trafficking, including exocytosis, endocytosis, and recycling (summary by Seki et al., 2000 [PubMed 11043516]).[supplied by OMIM].
Molecular Weight:	27900
Gene ID:	25837
NCBI Accession:	NP_055168
UniProt:	Q9ULW5

Application Details

Application Notes:	WB: 1:1000
Restrictions:	For Research Use only

Handling

Format:	Liquid
Buffer:	Purified polyclonal antibody supplied in PBS with 0.09 % (W/V) sodium azide.
Preservative:	Sodium azide
Precaution of Use:	This product contains Sodium azide: a POISONOUS AND HAZARDOUS SUBSTANCE which should be handled by trained staff only.
Storage:	4 °C,-20 °C
Storage Comment:	RAB26 Antibody (C-term) can be refrigerated at 2-8 °C for up to 6 months. For long term storage, keep at -20 °C.
Expiry Date:	6 months



Western Blotting

Image 1. RAB26 Antibody (C-term) (ABIN1536872 and ABIN2849184) western blot analysis in MCF-7 cell line lysates (35 µg/lane). This demonstrates the RAB26 antibody detected the RAB26 protein (arrow).