

Datasheet for ABIN1536873  
**anti-NSMCE1 antibody (C-Term)**[Go to Product page](#)

## 1 Image

## Overview

Quantity:	400 µL
Target:	NSMCE1
Binding Specificity:	AA 222-249, C-Term
Reactivity:	Human
Host:	Rabbit
Clonality:	Polyclonal
Conjugate:	This NSMCE1 antibody is un-conjugated
Application:	Western Blotting (WB)

## Product Details

Immunogen:	This NSMCE1 antibody is generated from rabbits immunized with a KLH conjugated synthetic peptide between 222-249 amino acids from the C-terminal region of human NSMCE1.
Clone:	RB37946
Isotype:	Ig Fraction
Purification:	This antibody is purified through a protein A column, followed by peptide affinity purification.

## Target Details

Target:	NSMCE1
Alternative Name:	NSMCE1 ( <a href="#">NSMCE1 Products</a> )
Background:	Probable component of the SMC5-SMC6 complex, a complex involved in DNA double-strand

## Target Details

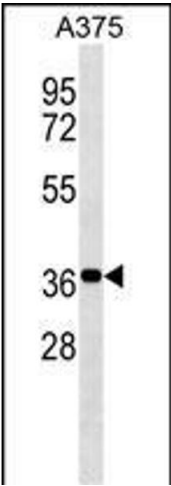
	breaks by homologous recombination. The complex may promote sister chromatid homologous recombination by recruiting the SMC1-SMC3 cohesin complex to double-strand breaks (By similarity).
Molecular Weight:	30855
Gene ID:	197370
NCBI Accession:	<a href="#">NP_659547</a>
UniProt:	<a href="#">Q8WV22</a>
Pathways:	<a href="#">Positive Regulation of Response to DNA Damage Stimulus</a>

## Application Details

Application Notes:	WB: 1:1000
Restrictions:	For Research Use only

## Handling

Format:	Liquid
Buffer:	Purified polyclonal antibody supplied in PBS with 0.09 % (W/V) sodium azide.
Preservative:	Sodium azide
Precaution of Use:	This product contains Sodium azide: a POISONOUS AND HAZARDOUS SUBSTANCE which should be handled by trained staff only.
Storage:	4 °C,-20 °C
Storage Comment:	NSMCE1 Antibody (C-term) can be refrigerated at 2-8 °C for up to 6 months. For long term storage, keep at -20 °C.
Expiry Date:	6 months



Western Blotting

**Image 1.** NSMCE1 Antibody (C-term) (ABIN1536873 and ABIN2849858) western blot analysis in cell line lysates (35 µg/lane). This demonstrates the NSMCE1 Antibody detected the NSMCE1 protein (arrow).