



[Go to Product page](#)

Datasheet for ABIN1536874
anti-RPF2 antibody (C-Term)

1 Image

Overview

Quantity:	400 µL
Target:	RPF2
Binding Specificity:	AA 272-299, C-Term
Reactivity:	Human
Host:	Rabbit
Clonality:	Polyclonal
Conjugate:	This RPF2 antibody is un-conjugated
Application:	Western Blotting (WB)

Product Details

Immunogen:	This RPF2 antibody is generated from rabbits immunized with a KLH conjugated synthetic peptide between 272-299 amino acids from the C-terminal region of human RPF2.
Clone:	RB37438
Isotype:	Ig Fraction
Purification:	This antibody is purified through a protein A column, followed by peptide affinity purification.

Target Details

Target:	RPF2
Alternative Name:	RPF2 (RPF2 Products)
Background:	The function of this protein remains unknown.

Target Details

Molecular Weight: 35583

Gene ID: 84154

NCBI Accession: [NP_115570](#)

UniProt: [Q9H7B2](#)

Pathways: [Ribonucleoprotein Complex Subunit Organization](#), [Ribosome Assembly](#)

Application Details

Application Notes: WB: 1:1000

Restrictions: For Research Use only

Handling

Format: Liquid

Buffer: Purified polyclonal antibody supplied in PBS with 0.09 % (W/V) sodium azide.

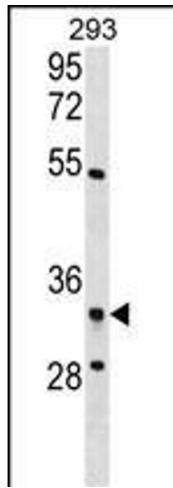
Preservative: Sodium azide

Precaution of Use: This product contains Sodium azide: a POISONOUS AND HAZARDOUS SUBSTANCE which should be handled by trained staff only.

Storage: 4 °C, -20 °C

Storage Comment: RPF2 Antibody (C-term) can be refrigerated at 2-8 °C for up to 6 months. For long term storage, keep at -20 °C.

Expiry Date: 6 months



Western Blotting

Image 1. RPF2 Antibody (C-term) (ABIN1536874 and ABIN2850126) western blot analysis in 293 cell line lysates (35 µg/lane). This demonstrates the RPF2 antibody detected the RPF2 protein (arrow).