



Datasheet for ABIN1536875
anti-ARMC1 antibody (C-Term)



[Go to Product page](#)

1 Image

Overview

Quantity:	400 µL
Target:	ARMC1
Binding Specificity:	AA 223-249, C-Term
Reactivity:	Human
Host:	Rabbit
Clonality:	Polyclonal
Conjugate:	This ARMC1 antibody is un-conjugated
Application:	Western Blotting (WB)

Product Details

Immunogen:	This ARMC1 antibody is generated from rabbits immunized with a KLH conjugated synthetic peptide between 223-249 amino acids from the C-terminal region of human ARMC1.
Clone:	RB38151
Isotype:	Ig Fraction
Predicted Reactivity:	B, M
Purification:	This antibody is purified through a protein A column, followed by peptide affinity purification.

Target Details

Target:	ARMC1
Alternative Name:	ARMC1 (ARMC1 Products)

Target Details

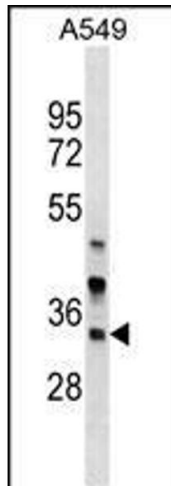
Background:	ARMC1 contains an armadillo repeat. Armadillo repeat proteins contain tandem copies of a degenerate protein sequence motif that forms a conserved three-dimensional structure. Armadillo repeat proteins function in various processes, including intracellular signalling and cytoskeletal regulation. The specific function of ARMC1 is unknown.
Molecular Weight:	31281
Gene ID:	55156
NCBI Accession:	NP_060590
UniProt:	Q9NVT9

Application Details

Application Notes:	WB: 1:1000
Restrictions:	For Research Use only

Handling

Format:	Liquid
Buffer:	Purified polyclonal antibody supplied in PBS with 0.09 % (W/V) sodium azide.
Preservative:	Sodium azide
Precaution of Use:	This product contains Sodium azide: a POISONOUS AND HAZARDOUS SUBSTANCE which should be handled by trained staff only.
Storage:	4 °C,-20 °C
Storage Comment:	ARMC1 Antibody (C-term) can be refrigerated at 2-8 °C for up to 6 months. For long term storage, keep at -20 °C.
Expiry Date:	6 months



Western Blotting

Image 1. ARMC1 Antibody (C-term) (ABIN1536875 and ABIN2849465) western blot analysis in A549 cell line lysates (35 µg/lane). This demonstrates the ARMC1 antibody detected the ARMC1 protein (arrow).