



[Go to Product page](#)

Datasheet for ABIN1536883
anti-PSG2 antibody (C-Term)

1 Image

Overview

Quantity:	400 µL
Target:	PSG2
Binding Specificity:	AA 225-254, C-Term
Reactivity:	Human
Host:	Rabbit
Clonality:	Polyclonal
Conjugate:	This PSG2 antibody is un-conjugated
Application:	Western Blotting (WB)

Product Details

Immunogen:	This PSG2 antibody is generated from rabbits immunized with a KLH conjugated synthetic peptide between 225-254 amino acids from the C-terminal region of human PSG2.
Clone:	RB35871
Isotype:	Ig Fraction
Purification:	This antibody is purified through a protein A column, followed by peptide affinity purification.

Target Details

Target:	PSG2
Alternative Name:	PSG2 (PSG2 Products)
Background:	The human pregnancy-specific glycoproteins (PSGs) are a family of proteins that are

Target Details

synthesized in large amounts by placental trophoblasts and released into the maternal circulation during pregnancy. Molecular cloning and analysis of several PSG genes has indicated that the PSGs form a subgroup of the carcinoembryonic antigen (CEA) gene family, which belongs to the immunoglobulin superfamily of genes. Members of the CEA family consist of a single N domain, with structural similarity to the immunoglobulin variable domains, followed by a variable number of immunoglobulin constant-like A and/or B domains. Most PSGs have an arg-gly-asp (RGD) motif, which has been shown to function as an adhesion recognition signal for several integrins, in the N-terminal domain (summary by Teglund et al., 1994 [PubMed 7851896]). For additional general information about the PSG gene family, see PSG1 (MIM 176390).

Molecular Weight: 37216

Gene ID: 5670

NCBI Accession: [NP_112536](#)

UniProt: [P11465](#)

Application Details

Application Notes: WB: 1:1000

Restrictions: For Research Use only

Handling

Format: Liquid

Buffer: Purified polyclonal antibody supplied in PBS with 0.09 % (W/V) sodium azide.

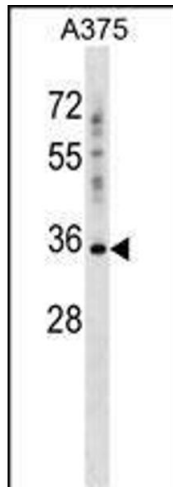
Preservative: Sodium azide

Precaution of Use: This product contains Sodium azide: a POISONOUS AND HAZARDOUS SUBSTANCE which should be handled by trained staff only.

Storage: 4 °C, -20 °C

Storage Comment: PSG2 Antibody (C-term) can be refrigerated at 2-8 °C for up to 6 months. For long term storage, keep at -20 °C.

Expiry Date: 6 months



Western Blotting

Image 1. PSG2 Antibody (C-term) (ABIN1536883 and ABIN2848574) western blot analysis in cell line lysates (35 µg/lane). This demonstrates the PSG2 antibody detected the PSG2 protein (arrow).