

Datasheet for ABIN1536884  
**anti-MMADHC antibody (C-Term)**[Go to Product page](#)

## 1 Image

## Overview

Quantity:	400 µL
Target:	MMADHC
Binding Specificity:	AA 226-253, C-Term
Reactivity:	Human
Host:	Rabbit
Clonality:	Polyclonal
Conjugate:	This MMADHC antibody is un-conjugated
Application:	Western Blotting (WB)

## Product Details

Immunogen:	This MMADHC antibody is generated from rabbits immunized with a KLH conjugated synthetic peptide between 226-253 amino acids from the C-terminal region of human MMADHC.
Clone:	RB37493
Isotype:	Ig Fraction
Predicted Reactivity:	M, Rat
Purification:	This antibody is purified through a protein A column, followed by peptide affinity purification.

## Target Details

Target:	MMADHC
Alternative Name:	MMADHC ( <a href="#">MMADHC Products</a> )

## Target Details

**Background:** This gene encodes a mitochondrial protein that is involved in an early step of vitamin B12 metabolism. Vitamin B12 (cobalamin) is essential for normal development and survival in humans. Mutations in this gene cause methylmalonic aciduria and homocystinuria type cblD (MMADHC), a disorder of cobalamin metabolism that is characterized by decreased levels of the coenzymes adenosylcobalamin and methylcobalamin. Pseudogenes have been identified on chromosomes 11 and X.

**Molecular Weight:** 32940

**Gene ID:** 27249

**NCBI Accession:** [NP\\_056517](#)

**UniProt:** [Q9H3L0](#)

## Application Details

**Application Notes:** WB: 1:1000

**Restrictions:** For Research Use only

## Handling

**Format:** Liquid

**Buffer:** Purified polyclonal antibody supplied in PBS with 0.09 % (W/V) sodium azide.

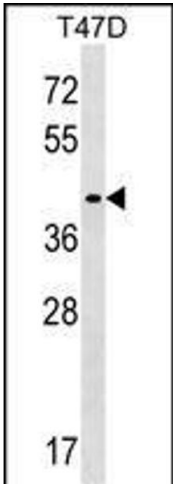
**Preservative:** Sodium azide

**Precaution of Use:** This product contains Sodium azide: a POISONOUS AND HAZARDOUS SUBSTANCE which should be handled by trained staff only.

**Storage:** 4 °C, -20 °C

**Storage Comment:** MMADHC Antibody (C-term) can be refrigerated at 2-8 °C for up to 6 months. For long term storage, keep at -20 °C.

**Expiry Date:** 6 months



**Western Blotting**

**Image 1.** ADHC Antibody (C-term) (ABIN1536884 and ABIN2849555) western blot analysis in T47D cell line lysates (35 µg/lane). This demonstrates the ADHC antibody detected the ADHC protein (arrow).