



[Go to Product page](#)

Datasheet for ABIN1536893  
**anti-SIRPb2 antibody (C-Term)**

1 Image

Overview

Quantity:	400 µL
Target:	SIRPb2
Binding Specificity:	AA 229-255, C-Term
Reactivity:	Human
Host:	Rabbit
Clonality:	Polyclonal
Conjugate:	This SIRPb2 antibody is un-conjugated
Application:	Western Blotting (WB)

Product Details

Immunogen:	This SIRPB2 antibody is generated from rabbits immunized with a KLH conjugated synthetic peptide between 229-255 amino acids from the C-terminal region of human SIRPB2.
Clone:	RB39863
Isotype:	Ig Fraction
Purification:	This antibody is purified through a protein A column, followed by peptide affinity purification.

Target Details

Target:	SIRPb2
Alternative Name:	SIRPB2 ( <a href="#">SIRPb2 Products</a> )
Background:	Probable immunoglobulin-like cell surface receptor. On binding with CD47, mediates cell-cell

## Target Details

---

adhesion. Engagement on T-cells by CD47 on antigen-presenting cells results in enhanced antigen-specific T-cell proliferation and costimulates T-cell activation.

Molecular Weight: 36968

Gene ID: 284759

NCBI Accession: [NP\\_001116434](#), [NP\\_001128308](#)

UniProt: [Q5JXA9](#)

## Application Details

---

Application Notes: WB: 1:1000

Restrictions: For Research Use only

## Handling

---

Format: Liquid

Buffer: Purified polyclonal antibody supplied in PBS with 0.09 % (W/V) sodium azide.

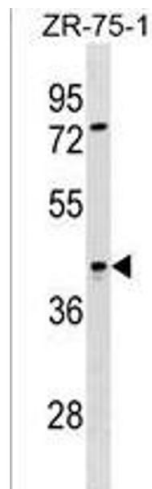
Preservative: Sodium azide

Precaution of Use: This product contains Sodium azide: a POISONOUS AND HAZARDOUS SUBSTANCE which should be handled by trained staff only.

Storage: 4 °C, -20 °C

Storage Comment: SIRPB2 Antibody (C-term) can be refrigerated at 2-8 °C for up to 6 months. For long term storage, keep at -20 °C.

Expiry Date: 6 months



### Western Blotting

**Image 1.** SIRPB2 Antibody (C-term) (ABIN1536893 and ABIN2838213) western blot analysis in ZR-75-1 cell line lysates (35 µg/lane). This demonstrates the SIRPB2 antibody detected the SIRPB2 protein (arrow).