



Datasheet for ABIN1536894
anti-MAGEB16 antibody (C-Term)



[Go to Product page](#)

1 Image

Overview

Quantity:	400 µL
Target:	MAGEB16
Binding Specificity:	AA 229-258, C-Term
Reactivity:	Human
Host:	Rabbit
Clonality:	Polyclonal
Conjugate:	This MAGEB16 antibody is un-conjugated
Application:	Western Blotting (WB)

Product Details

Immunogen:	This MAGEB16 antibody is generated from rabbits immunized with a KLH conjugated synthetic peptide between 229-258 amino acids from the C-terminal region of human MAGEB16.
Clone:	RB36628
Isotype:	Ig Fraction
Purification:	This antibody is purified through a protein A column, followed by peptide affinity purification.

Target Details

Target:	MAGEB16
Alternative Name:	MAGEB16 (MAGEB16 Products)
Molecular Weight:	36178

Target Details

Gene ID: 139604

NCBI Accession: [NP_001093391](#)

UniProt: [A2A368](#)

Application Details

Application Notes: WB: 1:1000

Restrictions: For Research Use only

Handling

Format: Liquid

Buffer: Purified polyclonal antibody supplied in PBS with 0.09 % (W/V) sodium azide.

Preservative: Sodium azide

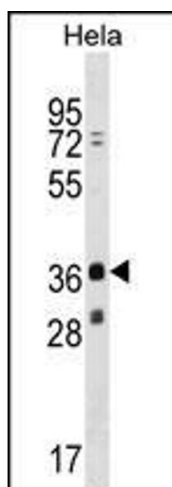
Precaution of Use: This product contains Sodium azide: a POISONOUS AND HAZARDOUS SUBSTANCE which should be handled by trained staff only.

Storage: 4 °C, -20 °C

Storage Comment: MAGEB16 Antibody (C-term) can be refrigerated at 2-8 °C for up to 6 months. For long term storage, keep at -20 °C.

Expiry Date: 6 months

Validation report #104430 for Immunohistochemistry (IHC)



Western Blotting

Image 1. GEB16 Antibody (C-term) (ABIN1536894 and ABIN2848623) western blot analysis in HeLa cell line lysates (35 µg/lane). This demonstrates the GEB16 antibody detected the GEB16 protein (arrow).