

Datasheet for ABIN1536899
anti-HLA-DPA1 antibody (C-Term)[Go to Product page](#)

1 Image

Overview

Quantity:	400 µL
Target:	HLA-DPA1
Binding Specificity:	AA 231-259, C-Term
Reactivity:	Human
Host:	Rabbit
Clonality:	Polyclonal
Conjugate:	This HLA-DPA1 antibody is un-conjugated
Application:	Western Blotting (WB)

Product Details

Immunogen:	This HLA-DPA1 antibody is generated from rabbits immunized with a KLH conjugated synthetic peptide between 231-259 amino acids from the C-terminal region of human HLA-DPA1.
Clone:	RB36729
Isotype:	Ig Fraction
Purification:	This antibody is purified through a protein A column, followed by peptide affinity purification.

Target Details

Target:	HLA-DPA1
Alternative Name:	HLA-DPA1 (HLA-DPA1 Products)
Background:	HLA-DPA1 belongs to the HLA class II alpha chain paralogues. This class II molecule is a

Target Details

heterodimer consisting of an alpha (DPA) and a beta (DPB) chain, both anchored in the membrane. It plays a central role in the immune system by presenting peptides derived from extracellular proteins. Class II molecules are expressed in antigen presenting cells (APC: B lymphocytes, dendritic cells, macrophages). The alpha chain is approximately 33-35 kDa and its gene contains 5 exons. Exon one encodes the leader peptide, exons 2 and 3 encode the two extracellular domains, exon 4 encodes the transmembrane domain and the cytoplasmic tail. Within the DP molecule both the alpha chain and the beta chain contain the polymorphisms specifying the peptide binding specificities, resulting in up to 4 different molecules.

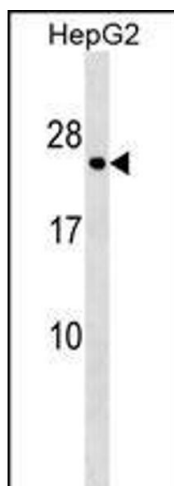
Molecular Weight:	29381
Gene ID:	3113
NCBI Accession:	NP_001229453 , NP_001229454 , NP_291032
UniProt:	P20036
Pathways:	TCR Signaling , Cancer Immune Checkpoints , Human Leukocyte Antigen (HLA) in Adaptive Immune Response

Application Details

Application Notes:	WB: 1:1000
Restrictions:	For Research Use only

Handling

Format:	Liquid
Buffer:	Purified polyclonal antibody supplied in PBS with 0.09 % (W/V) sodium azide.
Preservative:	Sodium azide
Precaution of Use:	This product contains Sodium azide: a POISONOUS AND HAZARDOUS SUBSTANCE which should be handled by trained staff only.
Storage:	4 °C,-20 °C
Storage Comment:	HLA-DPA1 Antibody (C-term) can be refrigerated at 2-8 °C for up to 6 months. For long term storage, keep at -20 °C.
Expiry Date:	6 months



Western Blotting

Image 1. HLA-D Antibody (C-term) (ABIN1536899 and ABIN2849337) western blot analysis in HepG2 cell line lysates (35 µg/lane). This demonstrates the HLA-D antibody detected the HLA-D protein (arrow).