



[Go to Product page](#)

Datasheet for ABIN1536904
anti-RPA4 antibody (C-Term)

1 Image

Overview

Quantity:	400 µL
Target:	RPA4
Binding Specificity:	AA 234-261, C-Term
Reactivity:	Human
Host:	Rabbit
Clonality:	Polyclonal
Conjugate:	This RPA4 antibody is un-conjugated
Application:	Western Blotting (WB)

Product Details

Immunogen:	This RPA4 antibody is generated from rabbits immunized with a KLH conjugated synthetic peptide between 234-261 amino acids from the C-terminal region of human RPA4.
Clone:	RB37437
Isotype:	Ig Fraction
Purification:	This antibody is purified through a protein A column, followed by peptide affinity purification.

Target Details

Target:	RPA4
Alternative Name:	RPA4 (RPA4 Products)
Background:	This gene encodes a single-stranded DNA-binding protein that is the 30- kDa subunit of the

Target Details

replication protein A complex. Replication protein A is an essential factor for DNA double-strand break repair and cell cycle checkpoint activation. The encoded protein localizes to DNA repair foci and may be involved in the cellular DNA damage response. This protein may also play a role in inhibiting viral replication.

Molecular Weight: 28868

Gene ID: 29935

NCBI Accession: [NP_037479](#)

UniProt: [Q13156](#)

Pathways: [Mitotic G1-G1/S Phases, DNA Replication](#)

Application Details

Application Notes: WB: 1:1000

Restrictions: For Research Use only

Handling

Format: Liquid

Buffer: Purified polyclonal antibody supplied in PBS with 0.09 % (W/V) sodium azide.

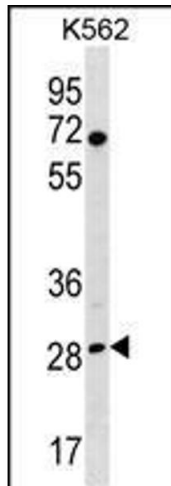
Preservative: Sodium azide

Precaution of Use: This product contains Sodium azide: a POISONOUS AND HAZARDOUS SUBSTANCE which should be handled by trained staff only.

Storage: 4 °C,-20 °C

Storage Comment: RPA4 Antibody (C-term) can be refrigerated at 2-8 °C for up to 6 months. For long term storage, keep at -20 °C.

Expiry Date: 6 months



Western Blotting

Image 1. R Antibody (C-term) (ABIN1536904 and ABIN2850185) western blot analysis in K562 cell line lysates (35 µg/lane). This demonstrates the R antibody detected the R protein (arrow).