



Datasheet for ABIN1536905  
**anti-LRRC3C antibody (C-Term)**



[Go to Product page](#)

1 Image

Overview

Quantity:	400 µL
Target:	LRRC3C
Binding Specificity:	AA 234-260, C-Term
Reactivity:	Human
Host:	Rabbit
Clonality:	Polyclonal
Conjugate:	This LRRC3C antibody is un-conjugated
Application:	Western Blotting (WB)

Product Details

Immunogen:	This LRRC3C antibody is generated from rabbits immunized with a KLH conjugated synthetic peptide between 234-260 amino acids from the C-terminal region of human LRRC3C.
Clone:	RB38881
Isotype:	Ig Fraction
Purification:	This antibody is purified through a protein A column, followed by peptide affinity purification.

Target Details

Target:	LRRC3C
Alternative Name:	LRRC3C ( <a href="#">LRRC3C Products</a> )
Background:	The function of this protein remains unknown.

## Target Details

Molecular Weight:	29314
Gene ID:	728129
NCBI Accession:	<a href="#">NP_001182474</a>
UniProt:	<a href="#">A6NJW4</a>

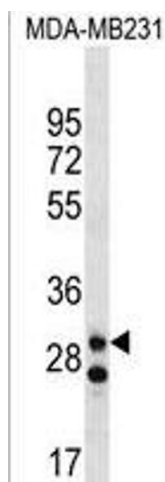
## Application Details

Application Notes:	WB: 1:1000
Restrictions:	For Research Use only

## Handling

Format:	Liquid
Buffer:	Purified polyclonal antibody supplied in PBS with 0.09 % (W/V) sodium azide.
Preservative:	Sodium azide
Precaution of Use:	This product contains Sodium azide: a POISONOUS AND HAZARDOUS SUBSTANCE which should be handled by trained staff only.
Storage:	4 °C, -20 °C
Storage Comment:	LRRC3C Antibody (C-term) can be refrigerated at 2-8 °C for up to 6 months. For long term storage, keep at -20 °C.
Expiry Date:	6 months

## Images



### Western Blotting

**Image 1.** LRRC3C Antibody (C-term) (ABIN1536905 and ABIN2850344) western blot analysis in MDA-M cell line lysates (35 µg/lane). This demonstrates the LRRC3C antibody detected the LRRC3C protein (arrow).