

Datasheet for ABIN1536906
anti-SLC25A20 antibody (C-Term)[Go to Product page](#)

1 Image

Overview

Quantity:	400 µL
Target:	SLC25A20
Binding Specificity:	AA 235-264, C-Term
Reactivity:	Mouse
Host:	Rabbit
Clonality:	Polyclonal
Conjugate:	This SLC25A20 antibody is un-conjugated
Application:	Western Blotting (WB)

Product Details

Immunogen:	This SLC25A20 antibody is generated from rabbits immunized with a KLH conjugated synthetic peptide between 235-264 amino acids from the C-terminal region of human SLC25A20.
Clone:	RB32132
Isotype:	Ig Fraction
Purification:	This antibody is purified through a protein A column, followed by peptide affinity purification.

Target Details

Target:	SLC25A20
Alternative Name:	SLC25A20 (SLC25A20 Products)
Background:	This gene product is one of several closely related mitochondrial-membrane carrier proteins

Target Details

that shuttle substrates between cytosol and the intramitochondrial matrix space. This protein mediates the transport of acylcarnitines into mitochondrial matrix for their oxidation by the mitochondrial fatty acid-oxidation pathway. Mutations in this gene are associated with carnitine-acylcarnitine translocase deficiency, which can cause a variety of pathological conditions such as hypoglycemia, cardiac arrest, hepatomegaly, hepatic dysfunction and muscle weakness, and is usually lethal in new born and infants.

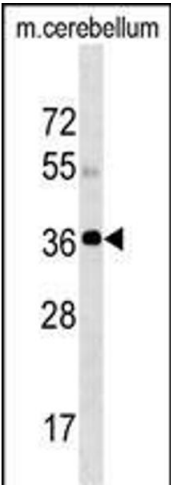
Molecular Weight:	32944
Gene ID:	788
NCBI Accession:	NP_000378
UniProt:	O43772
Pathways:	TCR Signaling , Production of Molecular Mediator of Immune Response , Maintenance of Protein Location , Toll-Like Receptors Cascades

Application Details

Application Notes:	WB: 1:1000
Restrictions:	For Research Use only

Handling

Format:	Liquid
Buffer:	Purified polyclonal antibody supplied in PBS with 0.09 % (W/V) sodium azide.
Preservative:	Sodium azide
Precaution of Use:	This product contains Sodium azide: a POISONOUS AND HAZARDOUS SUBSTANCE which should be handled by trained staff only.
Storage:	4 °C,-20 °C
Storage Comment:	SLC25A20 Antibody (C-term) can be refrigerated at 2-8 °C for up to 6 months. For long term storage, keep at -20 °C.
Expiry Date:	6 months



Western Blotting

Image 1. SLC25A20 Antibody (C-term) (ABIN1536906 and ABIN2838159) western blot analysis in mouse cerebellum tissue lysates (35 µg/lane). This demonstrates the SLC25A20 antibody detected the SLC25A20 protein (arrow).