

Datasheet for ABIN1536907  
**anti-MRPL2 antibody (C-Term)**[Go to Product page](#)

## 1 Image

## Overview

Quantity:	400 µL
Target:	MRPL2
Binding Specificity:	AA 236-264, C-Term
Reactivity:	Human
Host:	Rabbit
Clonality:	Polyclonal
Conjugate:	This MRPL2 antibody is un-conjugated
Application:	Western Blotting (WB)

## Product Details

Immunogen:	This MRPL2 antibody is generated from rabbits immunized with a KLH conjugated synthetic peptide between 236-264 amino acids from the C-terminal region of human MRPL2.
Clone:	RB37272
Isotype:	Ig Fraction
Predicted Reactivity:	B
Purification:	This antibody is purified through a protein A column, followed by peptide affinity purification.

## Target Details

Target:	MRPL2
Alternative Name:	MRPL2 ( <a href="#">MRPL2 Products</a> )

## Target Details

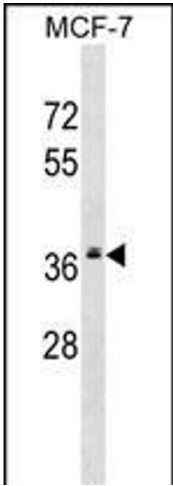
Background:	Mammalian mitochondrial ribosomal proteins are encoded by nuclear genes and help in protein synthesis within the mitochondrion. Mitochondrial ribosomes (mitoribosomes) consist of a small 28S subunit and a large 39S subunit. They have an estimated 75 % protein to rRNA composition compared to prokaryotic ribosomes, where this ratio is reversed. Another difference between mammalian mitoribosomes and prokaryotic ribosomes is that the latter contain a 5S rRNA. Among different species, the proteins comprising the mitoribosome differ greatly in sequence, and sometimes in biochemical properties, which prevents easy recognition by sequence homology. This gene encodes a 39S subunit protein that belongs to the Ecol2 ribosomal protein family. A pseudogene corresponding to this gene is found on chromosome 12q.
Molecular Weight:	33301
Gene ID:	51069
NCBI Accession:	<a href="#">NP_057034</a>
UniProt:	<a href="#">Q5T653</a>

## Application Details

Application Notes:	WB: 1:1000
Restrictions:	For Research Use only

## Handling

Format:	Liquid
Buffer:	Purified polyclonal antibody supplied in PBS with 0.09 % (W/V) sodium azide.
Preservative:	Sodium azide
Precaution of Use:	This product contains Sodium azide: a POISONOUS AND HAZARDOUS SUBSTANCE which should be handled by trained staff only.
Storage:	4 °C, -20 °C
Storage Comment:	MRPL2 Antibody (C-term) can be refrigerated at 2-8 °C for up to 6 months. For long term storage, keep at -20 °C.
Expiry Date:	6 months



Western Blotting

**Image 1.** MRPL2 Antibody (C-term) (ABIN1536907 and ABIN2848905) western blot analysis in MCF-7 cell line lysates (35 µg/lane). This demonstrates the MRPL2 antibody detected the MRPL2 protein (arrow).