

Datasheet for ABIN1536909  
**anti-SPESP1 antibody (C-Term)**[Go to Product page](#)

## 1 Image

## Overview

Quantity:	400 µL
Target:	SPESP1
Binding Specificity:	AA 236-262, C-Term
Reactivity:	Human
Host:	Rabbit
Clonality:	Polyclonal
Conjugate:	This SPESP1 antibody is un-conjugated
Application:	Western Blotting (WB)

## Product Details

Immunogen:	This SPESP1 antibody is generated from rabbits immunized with a KLH conjugated synthetic peptide between 236-262 amino acids from the C-terminal region of human SPESP1.
Clone:	RB39881
Isotype:	Ig Fraction
Purification:	This antibody is purified through a protein A column, followed by peptide affinity purification.

## Target Details

Target:	SPESP1
Alternative Name:	SPESP1 ( <a href="#">SPESP1 Products</a> )
Background:	The encoded protein is a human alloantigen involved in sperm-egg binding and fusion.

## Target Details

Molecular Weight:	38931
Gene ID:	246777
NCBI Accession:	<a href="#">NP_663633</a>
UniProt:	<a href="#">Q6UW49</a>

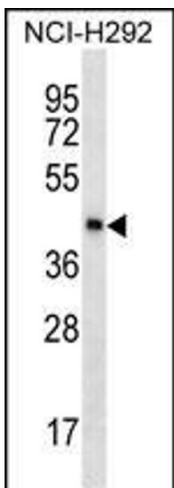
## Application Details

Application Notes:	WB: 1:1000
Restrictions:	For Research Use only

## Handling

Format:	Liquid
Buffer:	Purified polyclonal antibody supplied in PBS with 0.09 % (W/V) sodium azide.
Preservative:	Sodium azide
Precaution of Use:	This product contains Sodium azide: a POISONOUS AND HAZARDOUS SUBSTANCE which should be handled by trained staff only.
Storage:	4 °C, -20 °C
Storage Comment:	SPESP1 Antibody (C-term) can be refrigerated at 2-8 °C for up to 6 months. For long term storage, keep at -20 °C.
Expiry Date:	6 months

## Images



### Western Blotting

**Image 1.** SPESP1 Antibody (C-term) (ABIN1536909 and ABIN2838121) western blot analysis in NCI- cell line lysates (35 µg/lane). This demonstrates the SPESP1 antibody detected the SPESP1 protein (arrow).