

Datasheet for ABIN1536915
anti-PBLD1 antibody (C-Term)[Go to Product page](#)

1 Image

Overview

Quantity:	400 µL
Target:	PBLD1
Binding Specificity:	AA 242-269, C-Term
Reactivity:	Human
Host:	Rabbit
Clonality:	Polyclonal
Conjugate:	This PBLD1 antibody is un-conjugated
Application:	Western Blotting (WB)

Product Details

Immunogen:	This PBLD antibody is generated from rabbits immunized with a KLH conjugated synthetic peptide between 242-269 amino acids from the C-terminal region of human PBLD.
Clone:	RB37506
Isotype:	Ig Fraction
Purification:	This antibody is purified through a protein A column, followed by peptide affinity purification.

Target Details

Target:	PBLD1
Alternative Name:	PBLD (PBLD1 Products)
Background:	Belongs to the phzF family.

Target Details

Molecular Weight:	31785
Gene ID:	64081
NCBI Accession:	NP_071412
UniProt:	P30039

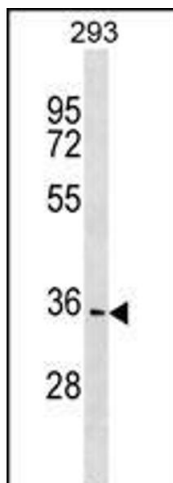
Application Details

Application Notes:	WB: 1:1000
Restrictions:	For Research Use only

Handling

Format:	Liquid
Buffer:	Purified polyclonal antibody supplied in PBS with 0.09 % (W/V) sodium azide.
Preservative:	Sodium azide
Precaution of Use:	This product contains Sodium azide: a POISONOUS AND HAZARDOUS SUBSTANCE which should be handled by trained staff only.
Storage:	4 °C, -20 °C
Storage Comment:	PBLD Antibody (C-term) can be refrigerated at 2-8 °C for up to 6 months. For long term storage, keep at -20 °C.
Expiry Date:	6 months

Images



Western Blotting

Image 1. PBLD Antibody (C-term) (ABIN1536915 and ABIN2849083) western blot analysis in 293 cell line lysates (35 µg/lane). This demonstrates the PBLD antibody detected the PBLD protein (arrow).