

Datasheet for ABIN1536917
anti-SH3GL1 antibody (C-Term)[Go to Product page](#)

1 Image

Overview

Quantity:	400 µL
Target:	SH3GL1
Binding Specificity:	AA 242-270, C-Term
Reactivity:	Human
Host:	Rabbit
Clonality:	Polyclonal
Conjugate:	This SH3GL1 antibody is un-conjugated
Application:	Western Blotting (WB)

Product Details

Immunogen:	This SH3GL1 antibody is generated from rabbits immunized with a KLH conjugated synthetic peptide between 242-270 amino acids from the C-terminal region of human SH3GL1.
Clone:	RB37000
Isotype:	Ig Fraction
Purification:	This antibody is purified through a protein A column, followed by peptide affinity purification.

Target Details

Target:	SH3GL1
Alternative Name:	SH3GL1 (SH3GL1 Products)
Background:	SH3GL1 is implicated in endocytosis. May recruit other proteins to membranes with high

Target Details

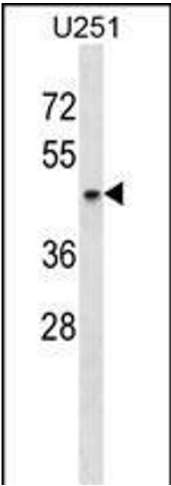
	curvature (By similarity).
Molecular Weight:	41490
Gene ID:	6455
NCBI Accession:	NP_001186872 , NP_001186873 , NP_003016
UniProt:	Q99961

Application Details

Application Notes:	WB: 1:1000
Restrictions:	For Research Use only

Handling

Format:	Liquid
Buffer:	Purified polyclonal antibody supplied in PBS with 0.09 % (W/V) sodium azide.
Preservative:	Sodium azide
Precaution of Use:	This product contains Sodium azide: a POISONOUS AND HAZARDOUS SUBSTANCE which should be handled by trained staff only.
Storage:	4 °C,-20 °C
Storage Comment:	SH3GL1 Antibody (C-term) can be refrigerated at 2-8 °C for up to 6 months. For long term storage, keep at -20 °C.
Expiry Date:	6 months



Western Blotting

Image 1. SH3GL1 Antibody (C-term) (ABIN1536917 and ABIN2848731) western blot analysis in cell line lysates (35 µg/lane). This demonstrates the SH3GL1 antibody detected the SH3GL1 protein (arrow).