



[Go to Product page](#)

Datasheet for ABIN1536922
anti-GIPC3 antibody (C-Term)

1 Image

Overview

Quantity:	400 µL
Target:	GIPC3
Binding Specificity:	AA 243-272, C-Term
Reactivity:	Human
Host:	Rabbit
Clonality:	Polyclonal
Conjugate:	This GIPC3 antibody is un-conjugated
Application:	Western Blotting (WB)

Product Details

Immunogen:	This GIPC3 antibody is generated from rabbits immunized with a KLH conjugated synthetic peptide between 243-272 amino acids from the C-terminal region of human GIPC3.
Clone:	RB38461
Isotype:	Ig Fraction
Purification:	This antibody is purified through a protein A column, followed by peptide affinity purification.

Target Details

Target:	GIPC3
Alternative Name:	GIPC3 (GIPC3 Products)
Background:	GIPC3 is widely expressed in adult and fetal tissues. Highest levels are found in jejunum, lymph

Target Details

node, parietal lobe, fetal spleen and fetal thymus. It is expressed in cervical, melanoma, chronic myelogenous and gastric cancer cell lines.

Molecular Weight: 33982

Gene ID: 126326

NCBI Accession: [NP_573568](#)

UniProt: [Q8TF64](#)

Application Details

Application Notes: WB: 1:1000

Restrictions: For Research Use only

Handling

Format: Liquid

Buffer: Purified polyclonal antibody supplied in PBS with 0.09 % (W/V) sodium azide.

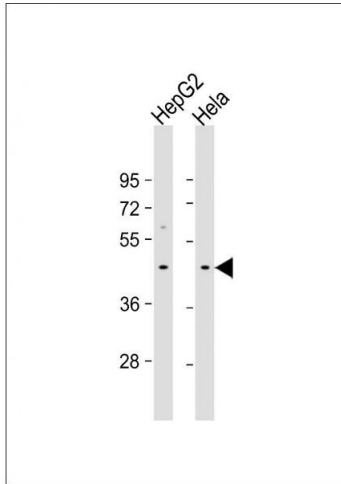
Preservative: Sodium azide

Precaution of Use: This product contains Sodium azide: a POISONOUS AND HAZARDOUS SUBSTANCE which should be handled by trained staff only.

Storage: 4 °C, -20 °C

Storage Comment: GIPC3 Antibody (C-term) can be refrigerated at 2-8 °C for up to 6 months. For long term storage, keep at -20 °C.

Expiry Date: 6 months



Western Blotting

Image 1. All lanes : Anti-GIPC3 Antibody (C-term) at 1:1000 dilution Lane 1: HepG2 whole cell lysate Lane 2: HeLa whole cell lysate Lysates/proteins at 20 μ g per lane. Secondary Goat Anti-Rabbit IgG, (H+L), Peroxidase conjugated at 1/10000 dilution. Predicted band size : 34 kDa Blocking/Dilution buffer: 5 % NFDm/TBST.