

Datasheet for ABIN1536923  
**anti-HHEX antibody (C-Term)**[Go to Product page](#)

## 1 Image

## Overview

Quantity:	400 µL
Target:	HHEX
Binding Specificity:	AA 244-270, C-Term
Reactivity:	Human, Mouse
Host:	Rabbit
Clonality:	Polyclonal
Conjugate:	This HHEX antibody is un-conjugated
Application:	Western Blotting (WB)

## Product Details

Immunogen:	This HHEX antibody is generated from rabbits immunized with a KLH conjugated synthetic peptide between 244-270 amino acids from the C-terminal region of human HHEX.
Clone:	RB22121
Isotype:	Ig Fraction
Purification:	This antibody is purified through a protein A column, followed by peptide affinity purification.

## Target Details

Target:	HHEX
Alternative Name:	HHEX ( <a href="#">HHEX Products</a> )
Background:	This gene encodes a member of the homeobox family of transcription factors, many of which

## Target Details

are involved in developmental processes. Expression in specific hematopoietic lineages suggests that this protein may play a role in hematopoietic differentiation.

Molecular Weight: 30022

Gene ID: 3087

NCBI Accession: [NP\\_002720](#)

UniProt: [Q03014](#)

## Application Details

Application Notes: WB: 1:1000

Restrictions: For Research Use only

## Handling

Format: Liquid

Buffer: Purified polyclonal antibody supplied in PBS with 0.09 % (W/V) sodium azide.

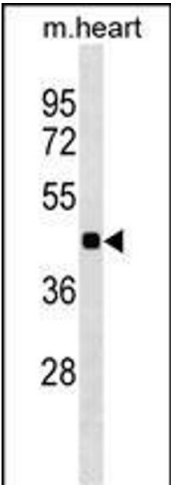
Preservative: Sodium azide

Precaution of Use: This product contains Sodium azide: a POISONOUS AND HAZARDOUS SUBSTANCE which should be handled by trained staff only.

Storage: 4 °C, -20 °C

Storage Comment: HHEX Antibody (C-term) can be refrigerated at 2-8 °C for up to 6 months. For long term storage, keep at -20 °C.

Expiry Date: 6 months



Western Blotting

**Image 1.** HHEX Antibody (C-term) (ABIN1536923 and ABIN2849944) western blot analysis in mouse heart tissue lysates (35 µg/lane). This demonstrates the HHEX antibody detected the HHEX protein (arrow).