

Datasheet for ABIN1536933
anti-KLHDC8B antibody (C-Term)[Go to Product page](#)

1 Image

Overview

Quantity:	400 µL
Target:	KLHDC8B
Binding Specificity:	AA 245-273, C-Term
Reactivity:	Human
Host:	Rabbit
Clonality:	Polyclonal
Conjugate:	This KLHDC8B antibody is un-conjugated
Application:	Western Blotting (WB)

Product Details

Immunogen:	This KLHDC8B antibody is generated from rabbits immunized with a KLH conjugated synthetic peptide between 245-273 amino acids from the C-terminal region of human KLHDC8B.
Clone:	RB36684
Isotype:	Ig Fraction
Predicted Reactivity:	B, M, Rat
Purification:	This antibody is purified through a protein A column, followed by peptide affinity purification.

Target Details

Target:	KLHDC8B
Alternative Name:	KLHDC8B (KLHDC8B Products)

Target Details

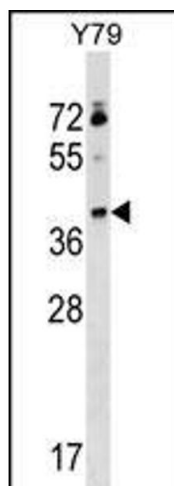
Background:	This gene encodes a protein which forms a distinct beta-propeller protein structure of kelch domains allowing for protein-protein interactions. Mutations in this gene have been associated with Hodgkin lymphoma.
Molecular Weight:	37676
Gene ID:	200942
NCBI Accession:	NP_775817
UniProt:	Q8IXV7

Application Details

Application Notes:	WB: 1:1000
Restrictions:	For Research Use only

Handling

Format:	Liquid
Buffer:	Purified polyclonal antibody supplied in PBS with 0.09 % (W/V) sodium azide.
Preservative:	Sodium azide
Precaution of Use:	This product contains Sodium azide: a POISONOUS AND HAZARDOUS SUBSTANCE which should be handled by trained staff only.
Storage:	4 °C, -20 °C
Storage Comment:	KLHDC8B Antibody (C-term) can be refrigerated at 2-8 °C for up to 6 months. For long term storage, keep at -20 °C.
Expiry Date:	6 months



Western Blotting

Image 1. KLHDC8B Antibody (C-term) (ABIN1536933 and ABIN2848637) western blot analysis in Y79 cell line lysates (35 µg/lane). This demonstrates the KLHDC8B antibody detected the KLHDC8B protein (arrow).