

Datasheet for ABIN1536938  
**anti-DAPP1 antibody (C-Term)**[Go to Product page](#)

## 2 Images

## Overview

Quantity:	400 µL
Target:	DAPP1
Binding Specificity:	AA 247-275, C-Term
Reactivity:	Human
Host:	Rabbit
Clonality:	Polyclonal
Conjugate:	This DAPP1 antibody is un-conjugated
Application:	Western Blotting (WB)

## Product Details

Immunogen:	This DAPP1 antibody is generated from rabbits immunized with a KLH conjugated synthetic peptide between 247-275 amino acids from the C-terminal region of human DAPP1.
Clone:	RB30369
Isotype:	Ig Fraction
Purification:	This antibody is purified through a protein A column, followed by peptide affinity purification.

## Target Details

Target:	DAPP1
Alternative Name:	DAPP1 ( <a href="#">DAPP1 Products</a> )
Background:	DAPP1 may act as a B-cell-associated adapter that regulates B-cell antigen receptor (BCR)-

## Target Details

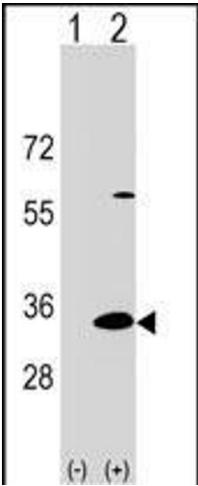
	signaling downstream of PI3K.
Molecular Weight:	32194
Gene ID:	27071
NCBI Accession:	<a href="#">NP_055210</a>
UniProt:	<a href="#">Q9UN19</a>
Pathways:	<a href="#">BCR Signaling</a>

## Application Details

Application Notes:	WB: 1:1000. WB: 1:1000
Restrictions:	For Research Use only

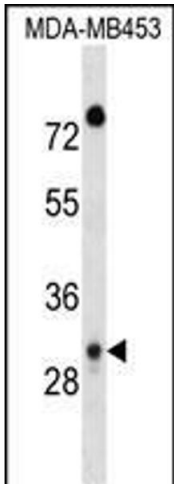
## Handling

Format:	Liquid
Buffer:	Purified polyclonal antibody supplied in PBS with 0.09 % (W/V) sodium azide.
Preservative:	Sodium azide
Precaution of Use:	This product contains Sodium azide: a POISONOUS AND HAZARDOUS SUBSTANCE which should be handled by trained staff only.
Storage:	4 °C,-20 °C
Storage Comment:	DAPP1 Antibody (C-term) can be refrigerated at 2-8 °C for up to 6 months. For long term storage, keep at -20 °C.
Expiry Date:	6 months



**Western Blotting**

**Image 1.** Western blot analysis of DP1 (arrow) using rabbit polyclonal DP1 Antibody (C-term) 17383b. 293 cell lysates (2 µg/lane) either nontransfected (Lane 1) or transiently transfected (Lane 2) with the DP1 gene.



**Western Blotting**

**Image 2.** DP1 Antibody (C-term) 17383b western blot analysis in MDA-M cell line lysates (35 µg/lane). This demonstrates the DP1 antibody detected the DP1 protein (arrow).