



[Go to Product page](#)

Datasheet for ABIN1536944

anti-PCMTD2 antibody (C-Term)

1 Image

Overview

Quantity:	400 µL
Target:	PCMTD2
Binding Specificity:	AA 251-278, C-Term
Reactivity:	Human
Host:	Rabbit
Clonality:	Polyclonal
Conjugate:	This PCMTD2 antibody is un-conjugated
Application:	Western Blotting (WB)

Product Details

Immunogen:	This PCMTD2 antibody is generated from rabbits immunized with a KLH conjugated synthetic peptide between 251-278 amino acids from the C-terminal region of human PCMTD2.
Clone:	RB38328
Isotype:	Ig Fraction
Predicted Reactivity:	B
Purification:	This antibody is purified through a protein A column, followed by peptide affinity purification.

Target Details

Target:	PCMTD2
Alternative Name:	PCMTD2 (PCMTD2 Products)

Target Details

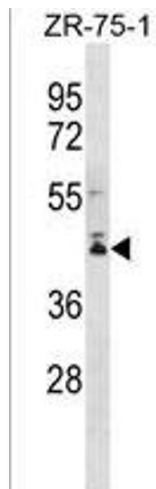
Background:	PCMTD2 belongs to the L-isoaspartyl/D-aspartyl protein methyltransferase family. There are 3 named isoforms produced by alternative splicing.
Molecular Weight:	41072
Gene ID:	55251
NCBI Accession:	NP_001098395 , NP_060727
UniProt:	Q9NV79

Application Details

Application Notes:	WB: 1:1000
Restrictions:	For Research Use only

Handling

Format:	Liquid
Buffer:	Purified polyclonal antibody supplied in PBS with 0.09 % (W/V) sodium azide.
Preservative:	Sodium azide
Precaution of Use:	This product contains Sodium azide: a POISONOUS AND HAZARDOUS SUBSTANCE which should be handled by trained staff only.
Storage:	4 °C, -20 °C
Storage Comment:	PCMTD2 Antibody (C-term) can be refrigerated at 2-8 °C for up to 6 months. For long term storage, keep at -20 °C.
Expiry Date:	6 months



Western Blotting

Image 1. PCMTD2 Antibody (C-term) (ABIN1536944 and ABIN2849981) western blot analysis in ZR-75-1 cell line lysates (35 µg/lane). This demonstrates the PCMTD2 antibody detected the PCMTD2 protein (arrow).