



[Go to Product page](#)

Datasheet for ABIN1536947
anti-GIPC2 antibody (C-Term)

2 Images

Overview

Quantity:	400 µL
Target:	GIPC2
Binding Specificity:	AA 252-279, C-Term
Reactivity:	Human
Host:	Rabbit
Clonality:	Polyclonal
Conjugate:	This GIPC2 antibody is un-conjugated
Application:	Western Blotting (WB)

Product Details

Immunogen:	This GIPC2 antibody is generated from rabbits immunized with a KLH conjugated synthetic peptide between 252-279 amino acids from the C-terminal region of human GIPC2.
Clone:	RB37324
Isotype:	Ig Fraction
Purification:	This antibody is purified through a protein A column, followed by peptide affinity purification.

Target Details

Target:	GIPC2
Alternative Name:	GIPC2 (GIPC2 Products)
Background:	The function of this protein is unknown.

Target Details

Molecular Weight:	34354
Gene ID:	54810
NCBI Accession:	NP_060125
UniProt:	Q8TF65

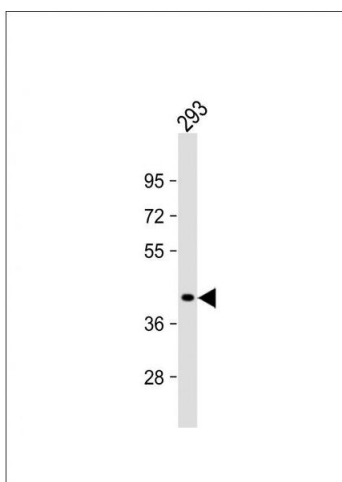
Application Details

Application Notes:	WB: 1:1000. WB: 1:1000
Restrictions:	For Research Use only

Handling

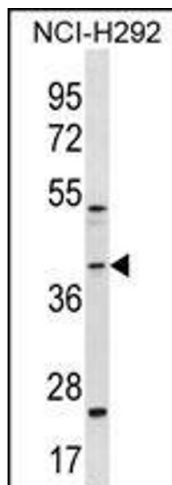
Format:	Liquid
Buffer:	Purified polyclonal antibody supplied in PBS with 0.09 % (W/V) sodium azide.
Preservative:	Sodium azide
Precaution of Use:	This product contains Sodium azide: a POISONOUS AND HAZARDOUS SUBSTANCE which should be handled by trained staff only.
Storage:	4 °C, -20 °C
Storage Comment:	GIPC2 Antibody (C-term) can be refrigerated at 2-8 °C for up to 6 months. For long term storage, keep at -20 °C.
Expiry Date:	6 months

Images



Western Blotting

Image 1. Anti-GIPC2 Antibody (C-term) at 1:1000 dilution + 293 whole cell lysate Lysates/proteins at 20 µg per lane. Secondary Goat Anti-Rabbit IgG, (H+L), Peroxidase conjugated at 1/10000 dilution. Predicted band size : 34 kDa
Blocking/Dilution buffer: 5 % NFDm/TBST.



Western Blotting

Image 2. GIPC2 Antibody (C-term) (ABIN1536947 and ABIN2850098) western blot analysis in NCI- cell line lysates (35 µg/lane). This demonstrates the GIPC2 antibody detected the GIPC2 protein (arrow).