

Datasheet for ABIN1536948 **anti-TPM2 antibody (C-Term)**



[Go to Product page](#)

1 Image

Overview

Quantity:	400 µL
Target:	TPM2
Binding Specificity:	AA 252-280, C-Term
Reactivity:	Human
Host:	Rabbit
Clonality:	Polyclonal
Conjugate:	This TPM2 antibody is un-conjugated
Application:	Western Blotting (WB)

Product Details

Immunogen:	This TPM2 antibody is generated from rabbits immunized with a KLH conjugated synthetic peptide between 252-280 amino acids from the C-terminal region of human TPM2.
Clone:	RB20863
Isotype:	Ig Fraction
Predicted Reactivity:	B, C, M, Rb, Rat
Purification:	This antibody is purified through a protein A column, followed by peptide affinity purification.

Target Details

Target:	TPM2
Alternative Name:	TPM2 (TPM2 Products)

Target Details

Background: This gene encodes beta-tropomyosin, a member of the actin filament binding protein family, and mainly expressed in slow, type 1 muscle fibers. Mutations in this gene can alter the expression of other sarcomeric tropomyosin proteins, and cause cap disease, nemaline myopathy and distal arthrogryposis syndromes. Alternatively spliced transcript variants encoding different isoforms have been found for this gene.

Molecular Weight: 32851

Gene ID: 7169

NCBI Accession: [NP_003280](#), [NP_998839](#)

UniProt: [P07951](#)

Application Details

Application Notes: WB: 1:1000

Restrictions: For Research Use only

Handling

Format: Liquid

Buffer: Purified polyclonal antibody supplied in PBS with 0.09 % (W/V) sodium azide.

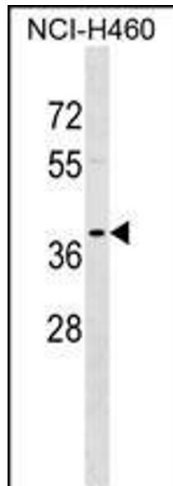
Preservative: Sodium azide

Precaution of Use: This product contains Sodium azide: a POISONOUS AND HAZARDOUS SUBSTANCE which should be handled by trained staff only.

Storage: 4 °C,-20 °C

Storage Comment: TPM2 Antibody (C-term) can be refrigerated at 2-8 °C for up to 6 months. For long term storage, keep at -20 °C.

Expiry Date: 6 months



Western Blotting

Image 1. T Antibody (C-term) (ABIN1536948 and ABIN2849142) western blot analysis in NCI- cell line lysates (35 µg/lane). This demonstrates the T antibody detected the T protein (arrow).