

Datasheet for ABIN1536953
anti-FKBP6 antibody (C-Term)[Go to Product page](#)

1 Image

Overview

Quantity:	400 µL
Target:	FKBP6
Binding Specificity:	AA 256-284, C-Term
Reactivity:	Human
Host:	Rabbit
Clonality:	Polyclonal
Conjugate:	This FKBP6 antibody is un-conjugated
Application:	Western Blotting (WB)

Product Details

Immunogen:	This FKBP6 antibody is generated from rabbits immunized with a KLH conjugated synthetic peptide between 256-284 amino acids from the C-terminal region of human FKBP6.
Clone:	RB36548
Isotype:	Ig Fraction
Purification:	This antibody is purified through a protein A column, followed by peptide affinity purification.

Target Details

Target:	FKBP6
Alternative Name:	FKBP6 (FKBP6 Products)
Background:	The protein encoded by this gene is a member of the immunophilin protein family, which play a

Target Details

role in immunoregulation and basic cellular processes involving protein folding and trafficking. The protein may have cis-trans prolyl isomerase activity, and binds to clathrin heavy chain and heat shock protein 72. This gene is found to be deleted in Williams syndrome, and the orthologous gene in mouse is essential for fertility and homologous pairing in male meiosis.

Molecular Weight: 37214

Gene ID: 8468

NCBI Accession: [NP_001128683](#), [NP_001268233](#), [NP_003593](#)

UniProt: [O75344](#)

Pathways: [M Phase](#)

Application Details

Application Notes: WB: 1:1000

Restrictions: For Research Use only

Handling

Format: Liquid

Buffer: Purified polyclonal antibody supplied in PBS with 0.09 % (W/V) sodium azide.

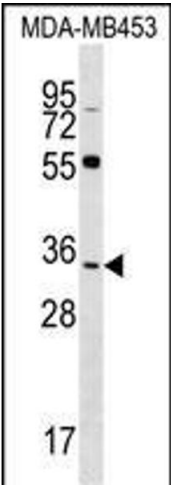
Preservative: Sodium azide

Precaution of Use: This product contains Sodium azide: a POISONOUS AND HAZARDOUS SUBSTANCE which should be handled by trained staff only.

Storage: 4 °C,-20 °C

Storage Comment: FKBP6 Antibody (C-term) can be refrigerated at 2-8 °C for up to 6 months. For long term storage, keep at -20 °C.

Expiry Date: 6 months



Western Blotting

Image 1. FKBP6 Antibody (C-term) (ABIN1536953 and ABIN2848611) western blot analysis in MDA-M cell line lysates (35 µg/lane). This demonstrates the FKBP6 antibody detected the FKBP6 protein (arrow).