



[Go to Product page](#)

Datasheet for ABIN1536956
anti-SDF4 antibody (C-Term)

1 Image

Overview

Quantity:	400 µL
Target:	SDF4
Binding Specificity:	AA 258-287, C-Term
Reactivity:	Human
Host:	Rabbit
Clonality:	Polyclonal
Conjugate:	This SDF4 antibody is un-conjugated
Application:	Western Blotting (WB)

Product Details

Immunogen:	This SDF4 antibody is generated from rabbits immunized with a KLH conjugated synthetic peptide between 258-287 amino acids from the C-terminal region of human SDF4.
Clone:	RB37570
Isotype:	Ig Fraction
Predicted Reactivity:	Pr, M, Rat
Purification:	This antibody is purified through a protein A column, followed by peptide affinity purification.

Target Details

Target:	SDF4
Alternative Name:	SDF4 (SDF4 Products)

Target Details

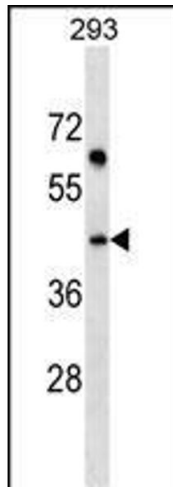
Background:	SDF4 may regulate calcium-dependent activities in the endoplasmic reticulum lumen or post-ER compartment (By similarity). Isoform 5 may be involved in the exocytosis of zymogens by pancreatic acini.
Molecular Weight:	41807
Gene ID:	51150
NCBI Accession:	NP_057260 , NP_057631
UniProt:	Q9BRK5

Application Details

Application Notes:	WB: 1:1000
Restrictions:	For Research Use only

Handling

Format:	Liquid
Buffer:	Purified polyclonal antibody supplied in PBS with 0.09 % (W/V) sodium azide.
Preservative:	Sodium azide
Precaution of Use:	This product contains Sodium azide: a POISONOUS AND HAZARDOUS SUBSTANCE which should be handled by trained staff only.
Storage:	4 °C, -20 °C
Storage Comment:	SDF4 Antibody (C-term) can be refrigerated at 2-8 °C for up to 6 months. For long term storage, keep at -20 °C.
Expiry Date:	6 months



Western Blotting

Image 1. SDF4 Antibody (C-term) (ABIN1536956 and ABIN2849103) western blot analysis in 293 cell line lysates (35 µg/lane). This demonstrates the SDF4 antibody detected the SDF4 protein (arrow).