

Datasheet for ABIN1536957
anti-PSMD14 antibody (C-Term)[Go to Product page](#)

1 Image

Overview

Quantity:	400 µL
Target:	PSMD14
Binding Specificity:	AA 258-287, C-Term
Reactivity:	Human
Host:	Rabbit
Clonality:	Polyclonal
Conjugate:	This PSMD14 antibody is un-conjugated
Application:	Western Blotting (WB)

Product Details

Immunogen:	This PSMD14 antibody is generated from rabbits immunized with a KLH conjugated synthetic peptide between 258-287 amino acids from the C-terminal region of human PSMD14.
Clone:	RB40997
Isotype:	Ig Fraction
Predicted Reactivity:	M
Purification:	This antibody is purified through a protein A column, followed by peptide affinity purification.

Target Details

Target:	PSMD14
Alternative Name:	PSMD14 (PSMD14 Products)

Target Details

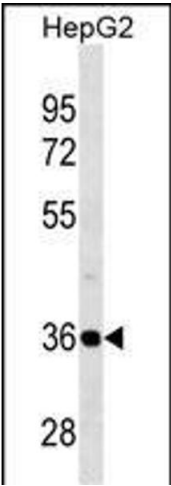
Background:	PSMD14 is a component of the 26S proteasome, a multiprotein complex that degrades proteins targeted for destruction by the ubiquitin pathway (Spataro et al., 1997 [PubMed 9374539]).
Molecular Weight:	34577
Gene ID:	10213
NCBI Accession:	NP_005796
UniProt:	O00487
Pathways:	Mitotic G1-G1/S Phases , DNA Replication , M Phase , Positive Regulation of Endopeptidase Activity , Synthesis of DNA , Ubiquitin Proteasome Pathway

Application Details

Application Notes:	WB: 1:1000
Restrictions:	For Research Use only

Handling

Format:	Liquid
Buffer:	Purified polyclonal antibody supplied in PBS with 0.09 % (W/V) sodium azide.
Preservative:	Sodium azide
Precaution of Use:	This product contains Sodium azide: a POISONOUS AND HAZARDOUS SUBSTANCE which should be handled by trained staff only.
Storage:	4 °C,-20 °C
Storage Comment:	PSMD14 Antibody (C-term) can be refrigerated at 2-8 °C for up to 6 months. For long term storage, keep at -20 °C.
Expiry Date:	6 months



Western Blotting

Image 1. PSMD14 Antibody (C-term) (ABIN1536957 and ABIN2838261) western blot analysis in HepG2 cell line lysates (35 µg/lane). This demonstrates the PSMD14 antibody detected the PSMD14 protein (arrow).