

Datasheet for ABIN1536958  
**anti-CENPE antibody (C-Term)**[Go to Product page](#)

## 1 Image

## Overview

Quantity:	400 µL
Target:	CENPE
Binding Specificity:	AA 2573-2601, C-Term
Reactivity:	Human
Host:	Rabbit
Clonality:	Polyclonal
Conjugate:	This CENPE antibody is un-conjugated
Application:	Western Blotting (WB)

## Product Details

Immunogen:	This CENPE antibody is generated from rabbits immunized with a KLH conjugated synthetic peptide between 2573-2601 amino acids from the C-terminal region of human CENPE.
Clone:	RB17611
Isotype:	Ig Fraction
Purification:	This antibody is purified through a protein A column, followed by peptide affinity purification.

## Target Details

Target:	CENPE
Alternative Name:	CENPE ( <a href="#">CENPE Products</a> )
Background:	Centrosome-associated protein E is a kinesin-like motor protein that accumulates in the G2

## Target Details

phase of the cell cycle. Unlike other centrosome-associated proteins, it is not present during interphase and first appears at the centromere region of chromosomes during prometaphase. CENPE is proposed to be one of the motors responsible for mammalian chromosome movement and/or spindle elongation.

Molecular Weight: 316415

Gene ID: 1062

NCBI Accession: [NP\\_001804](#)

UniProt: [Q02224](#)

Pathways: [M Phase](#), [Maintenance of Protein Location](#)

## Application Details

Application Notes: WB: 1:1000

Restrictions: For Research Use only

## Handling

Format: Liquid

Buffer: Purified polyclonal antibody supplied in PBS with 0.09 % (W/V) sodium azide.

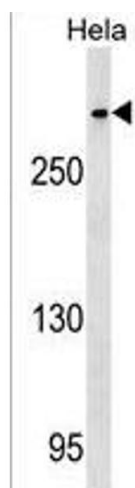
Preservative: Sodium azide

Precaution of Use: This product contains Sodium azide: a POISONOUS AND HAZARDOUS SUBSTANCE which should be handled by trained staff only.

Storage: 4 °C,-20 °C

Storage Comment: CENPE Antibody (C-term) can be refrigerated at 2-8 °C for up to 6 months. For long term storage, keep at -20 °C.

Expiry Date: 6 months



#### Western Blotting

**Image 1.** CENPE Antibody (C-term) (ABIN1536958 and ABIN2849491) western blot analysis in HeLa cell line lysates (35 µg/lane). This demonstrates the CENPE antibody detected the CENPE protein (arrow).