

Datasheet for ABIN1536966
anti-CCR4 antibody (C-Term)[Go to Product page](#)

1 Image

Overview

Quantity:	400 µL
Target:	CCR4
Binding Specificity:	AA 262-290, C-Term
Reactivity:	Human
Host:	Rabbit
Clonality:	Polyclonal
Conjugate:	This CCR4 antibody is un-conjugated
Application:	Western Blotting (WB)

Product Details

Immunogen:	This CCR4 antibody is generated from rabbits immunized with a KLH conjugated synthetic peptide between 262-290 amino acids from the C-terminal region of human CCR4.
Clone:	RB22223
Isotype:	Ig Fraction
Purification:	This antibody is purified through a protein A column, followed by peptide affinity purification.

Target Details

Target:	CCR4
Alternative Name:	CCR4 (CCR4 Products)
Background:	The protein encoded by this gene belongs to the G-protein-coupled receptor family . It is a

Target Details

receptor for the CC chemokine - MIP-1, RANTES, TARC and MCP-1. Chemokines are a group of small polypeptide, structurally related molecules that regulate cell trafficking of various types of leukocytes. The chemokines also play fundamental roles in the development, homeostasis, and function of the immune system, and they have effects on cells of the central nervous system as well as on endothelial cells involved in angiogenesis or angiostasis.

Molecular Weight: 41403

Gene ID: 1233

NCBI Accession: [NP_005499](#)

UniProt: [P51679](#)

Application Details

Application Notes: WB: 1:1000

Restrictions: For Research Use only

Handling

Format: Liquid

Buffer: Purified polyclonal antibody supplied in PBS with 0.09 % (W/V) sodium azide.

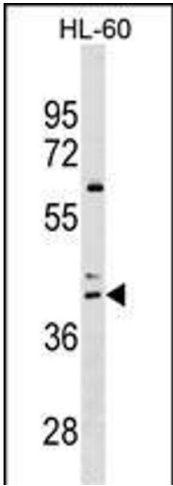
Preservative: Sodium azide

Precaution of Use: This product contains Sodium azide: a POISONOUS AND HAZARDOUS SUBSTANCE which should be handled by trained staff only.

Storage: 4 °C,-20 °C

Storage Comment: CCR4 Antibody (C-term) can be refrigerated at 2-8 °C for up to 6 months. For long term storage, keep at -20 °C.

Expiry Date: 6 months



Western Blotting

Image 1. CCR4 Antibody (C-term) (ABIN1536966 and ABIN2849635) western blot analysis in HL-60 cell line lysates (35 µg/lane). This demonstrates the CCR4 antibody detected the CCR4 protein (arrow).