



Datasheet for ABIN1536968
anti-Ei24 antibody (C-Term)



[Go to Product page](#)

1 Image

Overview

| | |
|----------------------|-------------------------------------|
| Quantity: | 400 µL |
| Target: | Ei24 |
| Binding Specificity: | AA 263-290, C-Term |
| Reactivity: | Mouse |
| Host: | Rabbit |
| Clonality: | Polyclonal |
| Conjugate: | This Ei24 antibody is un-conjugated |
| Application: | Western Blotting (WB) |

Product Details

| | |
|-----------------------|--|
| Immunogen: | This Mouse Ei24 antibody is generated from rabbits immunized with a KLH conjugated synthetic peptide between 263-290 amino acids from the C-terminal region of mouse Ei24. |
| Clone: | RB40274 |
| Isotype: | Ig Fraction |
| Predicted Reactivity: | B, H, Rat |
| Purification: | This antibody is purified through a protein A column, followed by peptide affinity purification. |

Target Details

| | |
|-------------------|--|
| Target: | Ei24 |
| Alternative Name: | Ei24 (Ei24 Products) |

Target Details

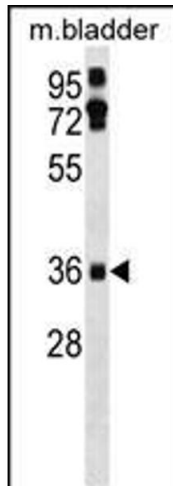
| | |
|-------------------|--|
| Background: | Ei24 may play a role in the cellular response to DNA damage and/or p53-mediated apoptosis. |
| Molecular Weight: | 38933 |
| Gene ID: | 13663 |
| NCBI Accession: | NP_001186423 , NP_031941 |
| UniProt: | Q61070 |

Application Details

| | |
|--------------------|-----------------------|
| Application Notes: | WB: 1:1000 |
| Restrictions: | For Research Use only |

Handling

| | |
|--------------------|--|
| Format: | Liquid |
| Buffer: | Purified polyclonal antibody supplied in PBS with 0.09 % (W/V) sodium azide. |
| Preservative: | Sodium azide |
| Precaution of Use: | This product contains Sodium azide: a POISONOUS AND HAZARDOUS SUBSTANCE which should be handled by trained staff only. |
| Storage: | 4 °C, -20 °C |
| Storage Comment: | Mouse Ei24 Antibody (C-term) can be refrigerated at 2-8 °C for up to 6 months. For long term storage, keep at -20 °C. |
| Expiry Date: | 6 months |



Western Blotting

Image 1. Mouse Ei24 Antibody (C-term) (ABIN1536968 and ABIN2838336) western blot analysis in mouse bladder tissue lysates (35 µg/lane). This demonstrates the Ei24 antibody detected the Ei24 protein (arrow).