

Datasheet for ABIN1536969
anti-ARPC2 antibody (C-Term)[Go to Product page](#)

1 Image

Overview

Quantity:	400 µL
Target:	ARPC2
Binding Specificity:	AA 263-291, C-Term
Reactivity:	Human
Host:	Rabbit
Clonality:	Polyclonal
Conjugate:	This ARPC2 antibody is un-conjugated
Application:	Western Blotting (WB)

Product Details

Immunogen:	This ARPC2 antibody is generated from rabbits immunized with a KLH conjugated synthetic peptide between 263-291 amino acids from the C-terminal region of human ARPC2.
Clone:	RB39330
Isotype:	Ig Fraction
Predicted Reactivity:	X, B, M, Rat
Purification:	This antibody is purified through a protein A column, followed by peptide affinity purification.

Target Details

Target:	ARPC2
Alternative Name:	ARPC2 (ARPC2 Products)

Target Details

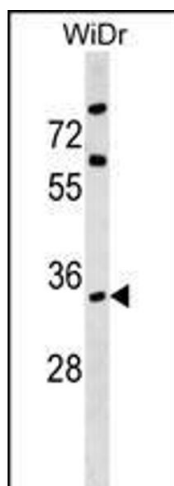
Background:	This gene encodes one of seven subunits of the human Arp2/3 protein complex. The Arp2/3 protein complex has been implicated in the control of actin polymerization in cells and has been conserved through evolution. The exact role of the protein encoded by this gene, the p34 subunit, has yet to be determined. Two alternatively spliced variants have been characterized to date. Additional alternatively spliced variants have been described but their full length nature has not been determined. [provided by RefSeq].
Molecular Weight:	34333
Gene ID:	10109
NCBI Accession:	NP_005722 , NP_690601
UniProt:	O15144
Pathways:	RTK Signaling , Regulation of Actin Filament Polymerization

Application Details

Application Notes:	WB: 1:1000
Restrictions:	For Research Use only

Handling

Format:	Liquid
Buffer:	Purified polyclonal antibody supplied in PBS with 0.09 % (W/V) sodium azide.
Preservative:	Sodium azide
Precaution of Use:	This product contains Sodium azide: a POISONOUS AND HAZARDOUS SUBSTANCE which should be handled by trained staff only.
Storage:	4 °C,-20 °C
Storage Comment:	ARPC2 Antibody (C-term) can be refrigerated at 2-8 °C for up to 6 months. For long term storage, keep at -20 °C.
Expiry Date:	6 months



Western Blotting

Image 1. ARPC2 Antibody (C-term) (ABIN1536969 and ABIN2850378) western blot analysis in WiDr cell line lysates (35 µg/lane). This demonstrates the ARPC2 antibody detected the ARPC2 protein (arrow).