

Datasheet for ABIN1536970
anti-CGREF1 antibody (C-Term)[Go to Product page](#)

1 Image

Overview

Quantity:	400 µL
Target:	CGREF1
Binding Specificity:	AA 266-292, C-Term
Reactivity:	Human
Host:	Rabbit
Clonality:	Polyclonal
Conjugate:	This CGREF1 antibody is un-conjugated
Application:	Western Blotting (WB)

Product Details

Immunogen:	This CGREF1 antibody is generated from rabbits immunized with a KLH conjugated synthetic peptide between 266-292 amino acids from the C-terminal region of human CGREF1.
Clone:	RB38184
Isotype:	Ig Fraction
Purification:	This antibody is purified through a protein A column, followed by peptide affinity purification.

Target Details

Target:	CGREF1
Alternative Name:	CGREF1 (CGREF1 Products)
Background:	CGREF1 mediates cell-cell adhesion in a calcium-dependent manner (By similarity). Able to

Target Details

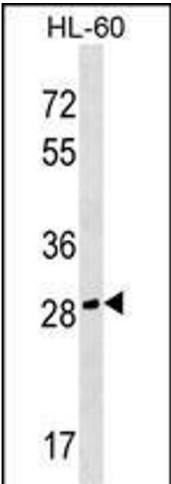
	inhibit growth in several cell lines.
Molecular Weight:	33456
Gene ID:	10669
NCBI Accession:	NP_001159711 , NP_001159712 , NP_001159713 , NP_006560
UniProt:	Q99674

Application Details

Application Notes:	WB: 1:1000
Restrictions:	For Research Use only

Handling

Format:	Liquid
Buffer:	Purified polyclonal antibody supplied in PBS with 0.09 % (W/V) sodium azide.
Preservative:	Sodium azide
Precaution of Use:	This product contains Sodium azide: a POISONOUS AND HAZARDOUS SUBSTANCE which should be handled by trained staff only.
Storage:	4 °C,-20 °C
Storage Comment:	CGREF1 Antibody (C-term) can be refrigerated at 2-8 °C for up to 6 months. For long term storage, keep at -20 °C.
Expiry Date:	6 months



Western Blotting

Image 1. CGREF1 Antibody (C-term) (ABIN1536970 and ABIN2849467) western blot analysis in HL-60 cell line lysates (35 µg/lane). This demonstrates the CGREF1 antibody detected the CGREF1 protein (arrow).