

Datasheet for ABIN1536972
anti-SKAP1 antibody (C-Term)[Go to Product page](#)

1 Image

Overview

Quantity:	400 µL
Target:	SKAP1
Binding Specificity:	AA 266-295, C-Term
Reactivity:	Human
Host:	Rabbit
Clonality:	Polyclonal
Conjugate:	This SKAP1 antibody is un-conjugated
Application:	Western Blotting (WB)

Product Details

Immunogen:	This SKAP1 antibody is generated from rabbits immunized with a KLH conjugated synthetic peptide between 266-295 amino acids from the C-terminal region of human SKAP1.
Clone:	RB39468
Isotype:	Ig Fraction
Purification:	This antibody is purified through a protein A column, followed by peptide affinity purification.

Target Details

Target:	SKAP1
Alternative Name:	SKAP1 (SKAP1 Products)
Background:	This gene encodes a T cell adaptor protein, a class of intracellular molecules with modular

Target Details

domains capable of recruiting additional proteins but that exhibit no intrinsic enzymatic activity. The encoded protein contains a unique N-terminal region followed by a PH domain and C-terminal SH3 domain. Along with the adhesion and degranulation-promoting adaptor protein, the encoded protein plays a critical role in inside-out signaling by coupling T-cell antigen receptor stimulation to the activation of integrins.

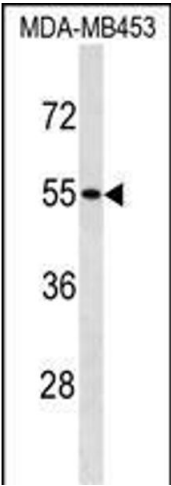
Molecular Weight:	41432
Gene ID:	8631
NCBI Accession:	NP_001068567 , NP_003717
UniProt:	Q86WV1

Application Details

Application Notes:	WB: 1:1000
Restrictions:	For Research Use only

Handling

Format:	Liquid
Buffer:	Purified polyclonal antibody supplied in PBS with 0.09 % (W/V) sodium azide.
Preservative:	Sodium azide
Precaution of Use:	This product contains Sodium azide: a POISONOUS AND HAZARDOUS SUBSTANCE which should be handled by trained staff only.
Storage:	4 °C,-20 °C
Storage Comment:	SKAP1 Antibody (C-term) can be refrigerated at 2-8 °C for up to 6 months. For long term storage, keep at -20 °C.
Expiry Date:	6 months



Western Blotting

Image 1. SK Antibody (C-term) 8824b western blot analysis in MDA-M cell line lysates (35 µg/lane). This demonstrates the SK antibody detected the SK protein (arrow).