

Datasheet for ABIN1536983  
**anti-PABPN1 antibody (C-Term)**[Go to Product page](#)

## 1 Image

## Overview

Quantity:	400 µL
Target:	PABPN1
Binding Specificity:	AA 270-298, C-Term
Reactivity:	Human
Host:	Rabbit
Clonality:	Polyclonal
Conjugate:	This PABPN1 antibody is un-conjugated
Application:	Western Blotting (WB)

## Product Details

Immunogen:	This PABPN1 antibody is generated from rabbits immunized with a KLH conjugated synthetic peptide between 270-298 amino acids from the C-terminal region of human PABPN1.
Clone:	RB36573
Isotype:	Ig Fraction
Predicted Reactivity:	B
Purification:	This antibody is purified through a protein A column, followed by peptide affinity purification.

## Target Details

Target:	PABPN1
Alternative Name:	PABPN1 ( <a href="#">PABPN1 Products</a> )

## Target Details

**Background:** This gene encodes an abundant nuclear protein that binds with high affinity to nascent poly(A) tails. The protein is required for progressive and efficient polymerization of poly(A) tails on the 3' ends of eukaryotic genes and controls the size of the poly(A) tail to about 250 nt. At steady-state, this protein is localized in the nucleus whereas a different poly(A) binding protein is localized in the cytoplasm. An expansion of the trinucleotide (GCG) repeat from normal 6 to 8-13 at the 5' end of the coding region of this gene leads to autosomal dominant oculopharyngeal muscular dystrophy (OPMD) disease. Multiple splice variants have been described but their full-length nature is not known. One splice variant includes introns 1 and 6 but no protein is formed.

**Molecular Weight:** 32749

**Gene ID:** 8106

**NCBI Accession:** [NP\\_004634](#)

**UniProt:** [Q86U42](#)

## Application Details

**Application Notes:** WB: 1:1000

**Restrictions:** For Research Use only

## Handling

**Format:** Liquid

**Buffer:** Purified polyclonal antibody supplied in PBS with 0.09 % (W/V) sodium azide.

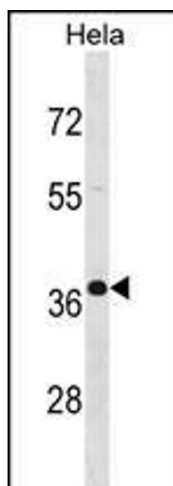
**Preservative:** Sodium azide

**Precaution of Use:** This product contains Sodium azide: a POISONOUS AND HAZARDOUS SUBSTANCE which should be handled by trained staff only.

**Storage:** 4 °C, -20 °C

**Storage Comment:** PABPN1 Antibody (C-term) can be refrigerated at 2-8 °C for up to 6 months. For long term storage, keep at -20 °C.

**Expiry Date:** 6 months



#### Western Blotting

**Image 1.** BPN1 Antibody (C-term) (ABIN1536983 and ABIN2848520) western blot analysis in HeLa cell line lysates (35 µg/lane). This demonstrates the BPN1 antibody detected the BPN1 protein (arrow).