

Datasheet for ABIN1536988
anti-S1PR2 antibody (C-Term)[Go to Product page](#)

1 Image

Overview

Quantity:	400 µL
Target:	S1PR2
Binding Specificity:	AA 272-298, C-Term
Reactivity:	Human
Host:	Rabbit
Clonality:	Polyclonal
Conjugate:	This S1PR2 antibody is un-conjugated
Application:	Western Blotting (WB)

Product Details

Immunogen:	This S1PR2 antibody is generated from rabbits immunized with a KLH conjugated synthetic peptide between 272-298 amino acids from the C-terminal region of human S1PR2.
Clone:	RB40507
Isotype:	Ig Fraction
Predicted Reactivity:	M, Rat
Purification:	This antibody is purified through a protein A column, followed by peptide affinity purification.

Target Details

Target:	S1PR2
Alternative Name:	S1PR2 (S1PR2 Products)

Target Details

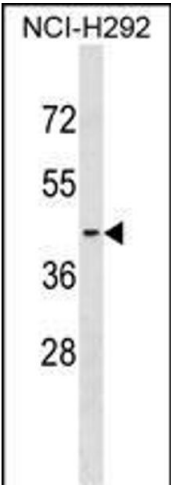
Background:	This gene encodes a member of the G protein-coupled receptors, as well as the EDG family of proteins. This protein participates in sphingosine 1-phosphate-induced cell proliferation, survival, and transcriptional activation
Molecular Weight:	38867
Gene ID:	9294
NCBI Accession:	NP_004221
UniProt:	O95136
Pathways:	Synaptic Membrane

Application Details

Application Notes:	WB: 1:1000
Restrictions:	For Research Use only

Handling

Format:	Liquid
Buffer:	Purified polyclonal antibody supplied in PBS with 0.09 % (W/V) sodium azide.
Preservative:	Sodium azide
Precaution of Use:	This product contains Sodium azide: a POISONOUS AND HAZARDOUS SUBSTANCE which should be handled by trained staff only.
Storage:	4 °C,-20 °C
Storage Comment:	S1PR2 Antibody (C-term) can be refrigerated at 2-8 °C for up to 6 months. For long term storage, keep at -20 °C.
Expiry Date:	6 months



Western Blotting

Image 1. S1PR2 Antibody (C-term) (ABIN1536988 and ABIN2850309) western blot analysis in NCI- cell line lysates (35 µg/lane).This demonstrates the S1PR2 antibody detected the S1PR2 protein (arrow).