

Datasheet for ABIN1536989
anti-AMMECR1 antibody (C-Term)[Go to Product page](#)

1 Image

Overview

Quantity:	400 µL
Target:	AMMECR1
Binding Specificity:	AA 271-298, C-Term
Reactivity:	Human
Host:	Rabbit
Clonality:	Polyclonal
Conjugate:	This AMMECR1 antibody is un-conjugated
Application:	Western Blotting (WB)

Product Details

Immunogen:	This AMMECR1 antibody is generated from rabbits immunized with a KLH conjugated synthetic peptide between 271-298 amino acids from the C-terminal region of human AMMECR1.
Clone:	RB39848
Isotype:	Ig Fraction
Predicted Reactivity:	M
Purification:	This antibody is purified through a protein A column, followed by peptide affinity purification.

Target Details

Target:	AMMECR1
Alternative Name:	AMMECR1 (AMMECR1 Products)

Target Details

Background: The exact function of this gene is not known, however, submicroscopic deletion of the X chromosome including this gene, COL4A5, and FACL4 genes, result in a contiguous gene deletion syndrome, the AMME complex (Alport syndrome, mental retardation, midface hypoplasia, and elliptocytosis). Alternatively spliced transcript variants encoding different isoforms have been found for this gene.

Molecular Weight: 35463

Gene ID: 9949

NCBI Accession: [NP_001020751](#), [NP_001165160](#), [NP_056180](#)

UniProt: [Q9Y4X0](#)

Application Details

Application Notes: WB: 1:1000

Restrictions: For Research Use only

Handling

Format: Liquid

Buffer: Purified polyclonal antibody supplied in PBS with 0.09 % (W/V) sodium azide.

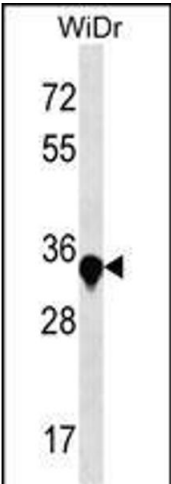
Preservative: Sodium azide

Precaution of Use: This product contains Sodium azide: a POISONOUS AND HAZARDOUS SUBSTANCE which should be handled by trained staff only.

Storage: 4 °C,-20 °C

Storage Comment: AMMECR1 Antibody (C-term) can be refrigerated at 2-8 °C for up to 6 months. For long term storage, keep at -20 °C.

Expiry Date: 6 months



Western Blotting

Image 1. MECR1 Antibody (C-term) (ABIN1536989 and ABIN2838117) western blot analysis in WiDr cell line lysates (35 µg/lane). This demonstrates the MECR1 antibody detected the MECR1 protein (arrow).