

Datasheet for ABIN1537000
anti-CrkL antibody (C-Term)



[Go to Product page](#)

1 Image

Overview

Quantity:	400 µL
Target:	CrkL (CRKL)
Binding Specificity:	AA 275-303, C-Term
Reactivity:	Mouse
Host:	Rabbit
Clonality:	Polyclonal
Conjugate:	This CrkL antibody is un-conjugated
Application:	Western Blotting (WB)

Product Details

Immunogen:	This Mouse Crkl antibody is generated from rabbits immunized with a KLH conjugated synthetic peptide between 275-303 amino acids from the C-terminal region of mouse Crkl.
Clone:	RB40265
Isotype:	Ig Fraction
Predicted Reactivity:	Rat
Purification:	This antibody is purified through a protein A column, followed by peptide affinity purification.

Target Details

Target:	CrkL (CRKL)
Alternative Name:	Crkl (CRKL Products)

Target Details

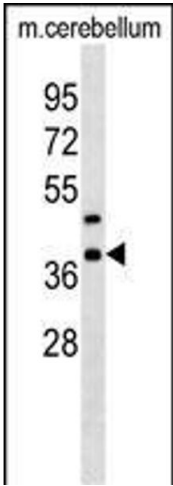
Background:	Crkl may mediate the transduction of intracellular signals.
Molecular Weight:	33830
Gene ID:	12929
NCBI Accession:	NP_001264160 , NP_031790
UniProt:	P47941
Pathways:	Interferon-gamma Pathway , Neurotrophin Signaling Pathway , Signaling of Hepatocyte Growth Factor Receptor

Application Details

Application Notes:	WB: 1:1000
Restrictions:	For Research Use only

Handling

Format:	Liquid
Buffer:	Purified polyclonal antibody supplied in PBS with 0.09 % (W/V) sodium azide.
Preservative:	Sodium azide
Precaution of Use:	This product contains Sodium azide: a POISONOUS AND HAZARDOUS SUBSTANCE which should be handled by trained staff only.
Storage:	4 °C, -20 °C
Storage Comment:	Mouse Crkl Antibody (C-term) can be refrigerated at 2-8 °C for up to 6 months. For long term storage, keep at -20 °C.
Expiry Date:	6 months



Western Blotting

Image 1. Mouse Crkl Antibody (C-term) (ABIN1537000 and ABIN2838331) western blot analysis in mouse cerebellum tissue lysates (35 µg/lane). This demonstrates the Crkl antibody detected the Crkl protein (arrow).