



[Go to Product page](#)

Datasheet for ABIN1537011
anti-CEP44 antibody (C-Term)

1 Image

Overview

Quantity:	400 µL
Target:	CEP44
Binding Specificity:	AA 278-307, C-Term
Reactivity:	Human
Host:	Rabbit
Clonality:	Polyclonal
Conjugate:	This CEP44 antibody is un-conjugated
Application:	Western Blotting (WB)

Product Details

Immunogen:	This K1712 antibody is generated from rabbits immunized with a KLH conjugated synthetic peptide between 278-307 amino acids from the C-terminal region of human K1712.
Clone:	RB32720
Isotype:	Ig Fraction
Purification:	This antibody is purified through a protein A column, followed by peptide affinity purification.

Target Details

Target:	CEP44
Abstract:	CEP44 Products
Background:	The function of this protein remains unknown.

Target Details

Molecular Weight:	44140
Gene ID:	80817
NCBI Accession:	NP_001035247 , NP_001138786
UniProt:	Q9C0F1

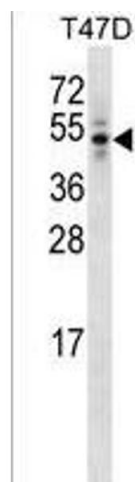
Application Details

Application Notes:	WB: 1:1000
Restrictions:	For Research Use only

Handling

Format:	Liquid
Buffer:	Purified polyclonal antibody supplied in PBS with 0.09 % (W/V) sodium azide.
Preservative:	Sodium azide
Precaution of Use:	This product contains Sodium azide: a POISONOUS AND HAZARDOUS SUBSTANCE which should be handled by trained staff only.
Storage:	4 °C, -20 °C
Storage Comment:	K1712 Antibody (C-term) can be refrigerated at 2-8 °C for up to 6 months. For long term storage, keep at -20 °C.
Expiry Date:	6 months

Images



Western Blotting

Image 1. Antibody (C-term) (ABIN1537011 and ABIN2849835) western blot analysis in T47D cell line lysates (35 µg/lane). This demonstrates the Antibody detected the protein (arrow).