

Datasheet for ABIN1537012
anti-OR6B2 antibody (C-Term)[Go to Product page](#)

1 Image

Overview

Quantity:	400 µL
Target:	OR6B2
Binding Specificity:	AA 278-304, C-Term
Reactivity:	Human
Host:	Rabbit
Clonality:	Polyclonal
Conjugate:	This OR6B2 antibody is un-conjugated
Application:	Western Blotting (WB)

Product Details

Immunogen:	This OR6B2 antibody is generated from rabbits immunized with a KLH conjugated synthetic peptide between 278-304 amino acids from the C-terminal region of human OR6B2.
Clone:	RB39853
Isotype:	Ig Fraction
Purification:	This antibody is purified through a protein A column, followed by peptide affinity purification.

Target Details

Target:	OR6B2
Alternative Name:	OR6B2 (OR6B2 Products)
Background:	Olfactory receptors interact with odorant molecules in the nose, to initiate a neuronal response

Target Details

that triggers the perception of a smell. The olfactory receptor proteins are members of a large family of G-protein-coupled receptors (GPCR) arising from single coding-exon genes. Olfactory receptors share a 7-transmembrane domain structure with many neurotransmitter and hormone receptors and are responsible for the recognition and G protein-mediated transduction of odorant signals. The olfactory receptor gene family is the largest in the genome. The nomenclature assigned to the olfactory receptor genes and proteins for this organism is independent of other organisms.

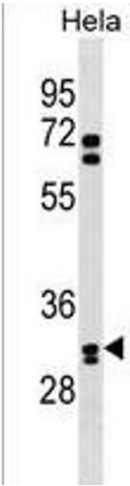
Molecular Weight:	35029
Gene ID:	389090
NCBI Accession:	NP_001005853
UniProt:	Q6IFH4

Application Details

Application Notes:	WB: 1:1000
Restrictions:	For Research Use only

Handling

Format:	Liquid
Buffer:	Purified polyclonal antibody supplied in PBS with 0.09 % (W/V) sodium azide.
Preservative:	Sodium azide
Precaution of Use:	This product contains Sodium azide: a POISONOUS AND HAZARDOUS SUBSTANCE which should be handled by trained staff only.
Storage:	4 °C, -20 °C
Storage Comment:	OR6B2 Antibody (C-term) can be refrigerated at 2-8 °C for up to 6 months. For long term storage, keep at -20 °C.
Expiry Date:	6 months



Western Blotting

Image 1. OR6B2 Antibody (C-term) (ABIN1537012 and ABIN2838299) western blot analysis in HeLa cell line lysates (35 µg/lane). This demonstrates the OR6B2 antibody detected the OR6B2 protein (arrow).