

Datasheet for ABIN1537018  
**anti-LIPN antibody (C-Term)**[Go to Product page](#)

## 1 Image

## Overview

Quantity:	400 µL
Target:	LIPN
Binding Specificity:	AA 279-308, C-Term
Reactivity:	Human
Host:	Rabbit
Clonality:	Polyclonal
Conjugate:	This LIPN antibody is un-conjugated
Application:	Western Blotting (WB)

## Product Details

Immunogen:	This LIPN antibody is generated from rabbits immunized with a KLH conjugated synthetic peptide between 279-308 amino acids from the C-terminal region of human LIPN.
Clone:	RB36563
Isotype:	Ig Fraction
Purification:	This antibody is purified through a protein A column, followed by peptide affinity purification.

## Target Details

Target:	LIPN
Alternative Name:	LIPN ( <a href="#">LIPN Products</a> )
Background:	LIPN plays a highly specific role in the last step of keratinocyte differentiation. May have an

## Target Details

essential function in lipid metabolism of the most differentiated epidermal layers.

Molecular Weight: 45534

Gene ID: 643418

NCBI Accession: [NP\\_001095939](#)

UniProt: [Q5VXI9](#)

## Application Details

Application Notes: WB: 1:1000

Restrictions: For Research Use only

## Handling

Format: Liquid

Buffer: Purified polyclonal antibody supplied in PBS with 0.09 % (W/V) sodium azide.

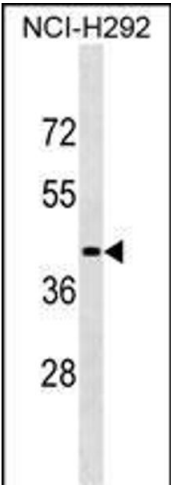
Preservative: Sodium azide

Precaution of Use: This product contains Sodium azide: a POISONOUS AND HAZARDOUS SUBSTANCE which should be handled by trained staff only.

Storage: 4 °C, -20 °C

Storage Comment: LIPN Antibody (C-term) can be refrigerated at 2-8 °C for up to 6 months. For long term storage, keep at -20 °C.

Expiry Date: 6 months



Western Blotting

**Image 1.** LIPN Antibody (C-term) (ABIN1537018 and ABIN2848516) western blot analysis in NCI- cell line lysates (35 µg/lane). This demonstrates the LIPN antibody detected the LIPN protein (arrow).