

Datasheet for ABIN1537020  
**anti-Mrgprf antibody (C-Term)**[Go to Product page](#)

## 1 Image

## Overview

Quantity:	400 µL
Target:	Mrgprf
Binding Specificity:	AA 280-307, C-Term
Reactivity:	Human
Host:	Rabbit
Clonality:	Polyclonal
Conjugate:	This Mrgprf antibody is un-conjugated
Application:	Western Blotting (WB)

## Product Details

Immunogen:	This MRGPRF antibody is generated from rabbits immunized with a KLH conjugated synthetic peptide between 280-307 amino acids from the C-terminal region of human MRGPRF.
Clone:	RB30093
Isotype:	Ig Fraction
Predicted Reactivity:	M, Rat
Purification:	This antibody is purified through a protein A column, followed by peptide affinity purification.

## Target Details

Target:	Mrgprf
Alternative Name:	MRGPRF ( <a href="#">Mrgprf Products</a> )

## Target Details

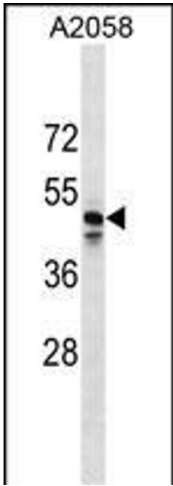
Background:	Orphan receptor. May bind to a neuropeptide and may regulate nociceptor function and/or development, including the sensation or modulation of pain (By similarity).
Molecular Weight:	38171
Gene ID:	116535
NCBI Accession:	<a href="#">NP_001091985</a> , <a href="#">NP_659452</a>
UniProt:	<a href="#">Q96AM1</a>

## Application Details

Application Notes:	WB: 1:1000
Restrictions:	For Research Use only

## Handling

Format:	Liquid
Buffer:	Purified polyclonal antibody supplied in PBS with 0.09 % (W/V) sodium azide.
Preservative:	Sodium azide
Precaution of Use:	This product contains Sodium azide: a POISONOUS AND HAZARDOUS SUBSTANCE which should be handled by trained staff only.
Storage:	4 °C,-20 °C
Storage Comment:	MRGPRF Antibody (C-term) can be refrigerated at 2-8 °C for up to 6 months. For long term storage, keep at -20 °C.
Expiry Date:	6 months



Western Blotting

**Image 1.** MRGPRF Antibody (C-term) (ABIN1537020 and ABIN2849830) western blot analysis in cell line lysates (35 µg/lane). This demonstrates the MRGPRF Antibody detected the MRGPRF protein (arrow).