

Datasheet for ABIN1537024
anti-Septin 2 antibody (C-Term)[Go to Product page](#)

2 Images

Overview

Quantity:	400 µL
Target:	Septin 2 (SEPT2)
Binding Specificity:	AA 280-309, C-Term
Reactivity:	Human
Host:	Rabbit
Clonality:	Polyclonal
Conjugate:	This Septin 2 antibody is un-conjugated
Application:	Western Blotting (WB)

Product Details

Immunogen:	This SEPT2 antibody is generated from rabbits immunized with a KLH conjugated synthetic peptide between 280-309 amino acids from the C-terminal region of human SEPT2.
Clone:	RB36619
Isotype:	Ig Fraction
Predicted Reactivity:	B, M, Rat
Purification:	This antibody is purified through a protein A column, followed by peptide affinity purification.

Target Details

Target:	Septin 2 (SEPT2)
Alternative Name:	SEPT2 (SEPT2 Products)

Target Details

Background: Filament-forming cytoskeletal GTPase. Required for normal organization of the actin cytoskeleton. Plays a role in the biogenesis of polarized columnar-shaped epithelium by maintaining polyglutamylated microtubules, thus facilitating efficient vesicle transport, and by impeding MAP4 binding to tubulin. Required for the progression through mitosis. Forms a scaffold at the midplane of the mitotic spindle required to maintain CENPE localization at kinetochores and consequently chromosome congression. During anaphase, may be required for chromosome segregation and spindle elongation. May play a role in the internalization of 2 intracellular microbial pathogens, *Listeria monocytogenes* and *Shigella flexneri*.

Molecular Weight: 41487

Gene ID: 4735

NCBI Accession: [NP_001008491](#), [NP_001008492](#), [NP_004395](#), [NP_006146](#)

UniProt: [Q15019](#)

Application Details

Application Notes: WB: 1:1000. WB: 1:1000

Restrictions: For Research Use only

Handling

Format: Liquid

Buffer: Purified polyclonal antibody supplied in PBS with 0.09 % (W/V) sodium azide.

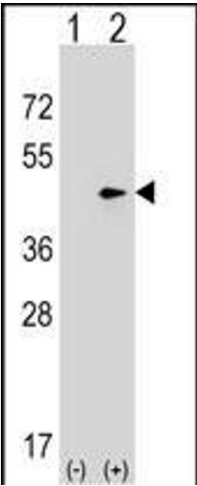
Preservative: Sodium azide

Precaution of Use: This product contains Sodium azide: a POISONOUS AND HAZARDOUS SUBSTANCE which should be handled by trained staff only.

Storage: 4 °C, -20 °C

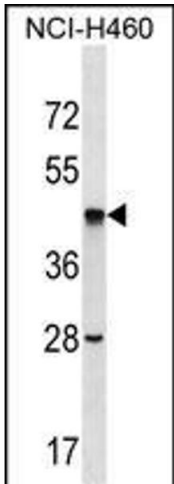
Storage Comment: SEPT2 Antibody (C-term) can be refrigerated at 2-8 °C for up to 6 months. For long term storage, keep at -20 °C.

Expiry Date: 6 months



Western Blotting

Image 1. Western blot analysis of SEPT2 (arrow) using rabbit polyclonal SEPT2 Antibody (C-term) (ABIN1537024 and ABIN2848457). 293 cell lysates (2 µg/lane) either nontransfected (Lane 1) or transiently transfected (Lane 2) with the SEPT2 gene.



Western Blotting

Image 2. SEPT2 Antibody (C-term) (ABIN1537024 and ABIN2848457) western blot analysis in NCI- cell line lysates (35 µg/lane). This demonstrates the SEPT2 antibody detected the SEPT2 protein (arrow).