

Datasheet for ABIN1537025  
**anti-CREBZF antibody (C-Term)**[Go to Product page](#)

## 1 Image

## Overview

Quantity:	400 µL
Target:	CREBZF
Binding Specificity:	AA 280-309, C-Term
Reactivity:	Human
Host:	Rabbit
Clonality:	Polyclonal
Conjugate:	This CREBZF antibody is un-conjugated
Application:	Western Blotting (WB)

## Product Details

Immunogen:	This CREBZF antibody is generated from rabbits immunized with a KLH conjugated synthetic peptide between 280-309 amino acids from the C-terminal region of human CREBZF.
Clone:	RB37212
Isotype:	Ig Fraction
Predicted Reactivity:	M
Purification:	This antibody is purified through a protein A column, followed by peptide affinity purification.

## Target Details

Target:	CREBZF
Alternative Name:	CREBZF ( <a href="#">CREBZF Products</a> )

## Target Details

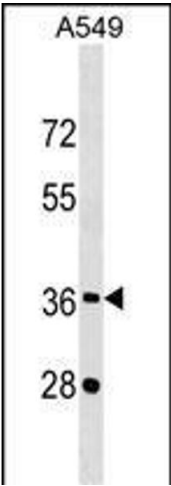
Background:	Strongly activates transcription when bound to HCFC1. Suppresses the expression of HSV proteins in cells infected with the virus in a HCFC1-dependent manner. Also suppresses the HCFC1-dependent transcriptional activation by CREB3 and reduces the amount of CREB3 in the cell. Able to down-regulate expression of some cellular genes in CREBZF-expressing cells.
Molecular Weight:	37134
Gene ID:	58487
NCBI Accession:	<a href="#">NP_001034707</a>
UniProt:	<a href="#">Q9NS37</a>

## Application Details

Application Notes:	WB: 1:1000
Restrictions:	For Research Use only

## Handling

Format:	Liquid
Buffer:	Purified polyclonal antibody supplied in PBS with 0.09 % (W/V) sodium azide.
Preservative:	Sodium azide
Precaution of Use:	This product contains Sodium azide: a POISONOUS AND HAZARDOUS SUBSTANCE which should be handled by trained staff only.
Storage:	4 °C, -20 °C
Storage Comment:	CREBZF Antibody (C-term) can be refrigerated at 2-8 °C for up to 6 months. For long term storage, keep at -20 °C.
Expiry Date:	6 months



Western Blotting

**Image 1.** CREBZF Antibody (C-term) (ABIN1537025 and ABIN2849161) western blot analysis in A549 cell line lysates (35 µg/lane). This demonstrates the CREBZF antibody detected the CREBZF protein (arrow).