

Datasheet for ABIN1537038

anti-Arylsulfatase A antibody (C-Term)



[Go to Product page](#)

1 Image

Overview

Quantity:	400 µL
Target:	Arylsulfatase A (ARSA)
Binding Specificity:	AA 284-312, C-Term
Reactivity:	Human
Host:	Rabbit
Clonality:	Polyclonal
Conjugate:	This Arylsulfatase A antibody is un-conjugated
Application:	Western Blotting (WB)

Product Details

Immunogen:	This ARSA antibody is generated from rabbits immunized with a KLH conjugated synthetic peptide between 284-312 amino acids from the C-terminal region of human ARSA.
Clone:	RB21677
Isotype:	Ig Fraction
Predicted Reactivity:	B, M
Purification:	This antibody is purified through a protein A column, followed by peptide affinity purification.

Target Details

Target:	Arylsulfatase A (ARSA)
Alternative Name:	ARSA (ARSA Products)

Target Details

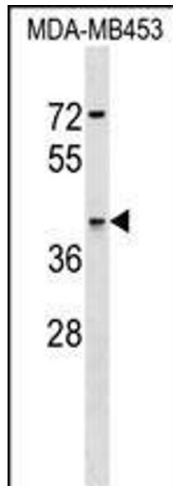
Background:	ASNA1 is the human homolog of the bacterial arsA gene. In E. coli, ArsA ATPase is the catalytic component of a multisubunit oxyanion pump that is responsible for resistance to arsenicals and antimonials.
Molecular Weight:	38793
Gene ID:	439
NCBI Accession:	NP_004308
UniProt:	O43681

Application Details

Application Notes:	WB: 1:1000
Restrictions:	For Research Use only

Handling

Format:	Liquid
Buffer:	Purified polyclonal antibody supplied in PBS with 0.09 % (W/V) sodium azide.
Preservative:	Sodium azide
Precaution of Use:	This product contains Sodium azide: a POISONOUS AND HAZARDOUS SUBSTANCE which should be handled by trained staff only.
Storage:	4 °C, -20 °C
Storage Comment:	ARSA Antibody (C-term) can be refrigerated at 2-8 °C for up to 6 months. For long term storage, keep at -20 °C.
Expiry Date:	6 months



Western Blotting

Image 1. ARSA Antibody (C-term) (ABIN1537038 and ABIN2849629) western blot analysis in MDA-M cell line lysates (35 µg/lane). This demonstrates the ARSA antibody detected the ARSA protein (arrow).