



[Go to Product page](#)

Datasheet for ABIN1537050
anti-DCAF7 antibody (C-Term)

1 Image

Overview

Quantity:	400 µL
Target:	DCAF7
Binding Specificity:	AA 285-314, C-Term
Reactivity:	Human
Host:	Rabbit
Clonality:	Polyclonal
Conjugate:	This DCAF7 antibody is un-conjugated
Application:	Western Blotting (WB)

Product Details

Immunogen:	This WDR68 antibody is generated from rabbits immunized with a KLH conjugated synthetic peptide between 285-314 amino acids from the C-terminal region of human WDR68.
Clone:	RB37181
Isotype:	Ig Fraction
Predicted Reactivity:	M
Purification:	This antibody is purified through a protein A column, followed by peptide affinity purification.

Target Details

Target:	DCAF7
Alternative Name:	WDR68 (DCAF7 Products)

Target Details

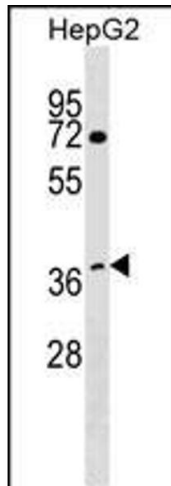
Background:	WDR68 is involved in craniofacial development. Acts upstream of the EDN1 pathway and is required for formation of the upper jaw equivalent, the palatoquadrate. The activity required for EDN1 pathway function differs between the first and second arches (By similarity). Associates with DIAPH1 and controls GLI1 transcriptional activity. Could be involved in normal and disease skin development. May function as a substrate receptor for CUL4-DDB1 E3 ubiquitin-protein ligase complex.
Molecular Weight:	38926
Gene ID:	10238
NCBI Accession:	NP_005819
UniProt:	P61962
Pathways:	SARS-CoV-2 Protein Interactome

Application Details

Application Notes:	WB: 1:1000
Restrictions:	For Research Use only

Handling

Format:	Liquid
Buffer:	Purified polyclonal antibody supplied in PBS with 0.09 % (W/V) sodium azide.
Preservative:	Sodium azide
Precaution of Use:	This product contains Sodium azide: a POISONOUS AND HAZARDOUS SUBSTANCE which should be handled by trained staff only.
Storage:	4 °C,-20 °C
Storage Comment:	WDR68 Antibody (C-term) can be refrigerated at 2-8 °C for up to 6 months. For long term storage, keep at -20 °C.
Expiry Date:	6 months



Western Blotting

Image 1. WDR68 Antibody (C-term) (ABIN1537050 and ABIN2848954) western blot analysis in HepG2 cell line lysates (35 µg/lane). This demonstrates the WDR68 antibody detected the WDR68 protein (arrow).